

# DUMPSBOSS.COM

## Brocade Certified Fabric Professional Gen 5

Brocade 143-085

Version Demo

Total Demo Questions: 10

Total Premium Questions: 91

Buy Premium PDF

<https://dumpsboss.com>

[support@dumpsboss.com](mailto:support@dumpsboss.com)

dumpsboss.com

## Topic Break Down

| Topic  | No. of Questions |
|--|------------------|
| Topic 1, Product Features                      | 13               |
| Topic 2, Implementation and Configuration      | 12               |
| Topic 3, SAN Management                        | 8                |
| Topic 4, Adaptive Networking and Fabric Vision | 10               |
| Topic 5, FC-FC Routing                         | 16               |
| Topic 6, Extension Features and Implementation | 14               |
| Topic 7, Advanced Troubleshooting              | 18               |
| Total  | 91               |



**QUESTION NO: 1**

Which two statements are true about Access Gateway N\_Port failover? (Choose two.)

- A. It changes the F\_Port to N\_Port mapping in the event of an F\_Port link failure.
- B. It changes the F\_Port to N\_Port mapping in the event of an N\_Port link failure.
- C. It changes the N\_Port FC address to match the F\_Port address to allow non-disruptive failover.
- D. It changes the F\_Port FC address based on the new N\_Port.

**ANSWER: B D**

**QUESTION NO: 2**

You want to monitor traffic between a virtual host and a specified LUN. Additionally, you want to have the switch send an e-mail to the administrator if the transmit bandwidth exceeds a certain threshold.

Which two steps will accomplish this task? (Choose two.)

- A. Create a bidirectional flow between the host and storage and specify the LUN number.
- B. Create a unidirectional flow between the host and storage and specify the LUN number.
- C. Configure e-mail alerts in Flow Vision.
- D. Configure e-mail alerts in MAPS.

**ANSWER: B D**

**QUESTION NO: 3**

Exhibit:

```
fcr_switch:admin_06> switchshow
Index Slot Port Address Media Speed State
=====
...
20 2 4 ee1400 id N4 Online EX_Port (Trunk port, master is Slot 2 Port 7 )
21 2 5 ee1500 id N4 Online EX_Port (Trunk port, master is Slot 2 Port 7 )
22 2 6 ee1600 id N4 Online EX_Port (Trunk port, master is Slot 2 Port 7 )
23 2 7 ee1700 id N4 Online EX_Port 10:00:00:60:69:80:1d:bc "MtOlympus_72" (fabric id = 2 ) (Trunk master)
```

In the exhibit, if the master port goes offline, what will occur?

- A. The slave links will go offline.

- B. Frames on the slave links will be lost.
- C. The trunk group will split into multiple trunk groups.
- D. Frames on the master link will be lost.

**ANSWER: D**

#### QUESTION NO: 4

You need to configure a long distance link that connects to a time-division multiplexer (TDM).

Which two statements are true? (Choose two.)

- A. You must disable QoS before configuring long distance.
- B. You must disable R\_RDY Mode before configuring long distance.
- C. You must disable FC Fastwrite before configuring long distance.
- D. You must disable Credit Recovery before configuring long distance.

**ANSWER: A D**

#### QUESTION NO: 5

Your customer is replicating banking transaction data to a remote data center using Brocade 6510s and has a limited bandwidth of 32 Gbps. The transaction data should have priority over other data being replicated.

Which change meets this requirement?

- A. Configure compression on the trunk.
- B. Configure bottleneck detection on the trunk.
- C. Configure QoS on the trunk and use the setratelimit command for low priority traffic.
- D. Configure the QoS zone for the device transaction data to high priority.

**ANSWER: D**

#### QUESTION NO: 6

You need to restrict the users who are allowed to access a new Brocade DCX 8510-8. The user credentials and passwords must be centralized and identical on all DCX 8510-8s.

Which two actions will achieve this? (Choose two.)

- A. Configure LDAP authentication on all switches

- B. Configure LDAP authentication on the Principal switch
- C. Configure RADIUS authentication on the Principal switch
- D. Configure RADIUS authentication on all switches

**ANSWER: A D**

#### QUESTION NO: 7

Exhibit:

```
SW6510-131:FID128:admin> lscfg --show
```

```
Created switches FIDs(Domain IDs): 128(ds) (131) 50(1) 20(bs) (3) 60(1)
```

| Port | 0  | 1  | 2   | 3   | 4  | 5  | 6  | 7  | 8   | 9   |
|------|----|----|-----|-----|----|----|----|----|-----|-----|
| FID  | 20 | 20 | 128 | 128 | 50 | 50 | 60 | 60 | 128 | 128 |

<Output Truncated>

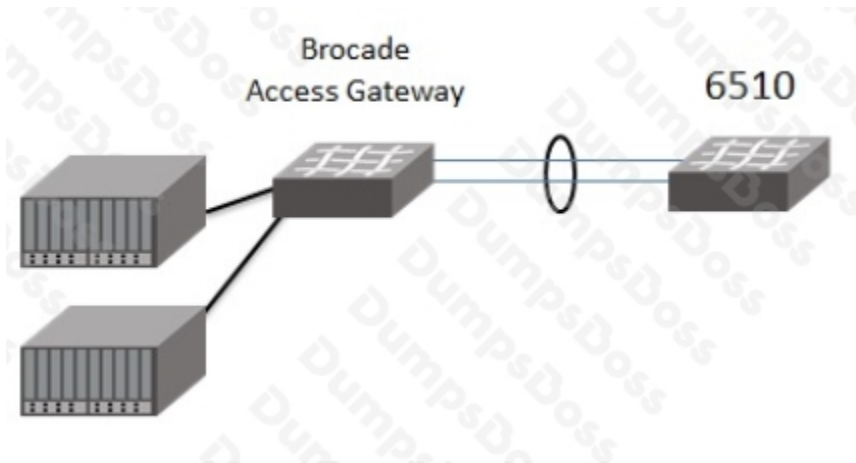
Referring to the exhibit, which two statements are true? (Choose two.)

- A. Port 2 can be configured as an EX\_Port.
- B. With proper configuration, ports 5 and 6 may be connected.
- C. With proper configuration, ports 1 and 2 may be connected.
- D. Port 1 may be configured as an EX\_Port.

**ANSWER: C D**

#### QUESTION NO: 8

Refer to the exhibit.



In the exhibit, what is required to configure the trunk?

- A. On the 6510, you must statically assign an Area\_ID to the trunk group.
- B. On the Access Gateway, statically assign an Area\_ID to the trunk group.
- C. Ensure that F\_Port trunking is enabled on both devices.
- D. Ensure all ports on the Access Gateway reside in the same quad.

**ANSWER: A**

#### QUESTION NO: 9

You have attached a Brocade DCX 8510-8 with one ISL to a Gen 5 fabric. The DCX has merged into the fabric, but it is showing several connection errors over several hours. You decide to run the D\_Port diagnostic test on the ISL from the DCX.

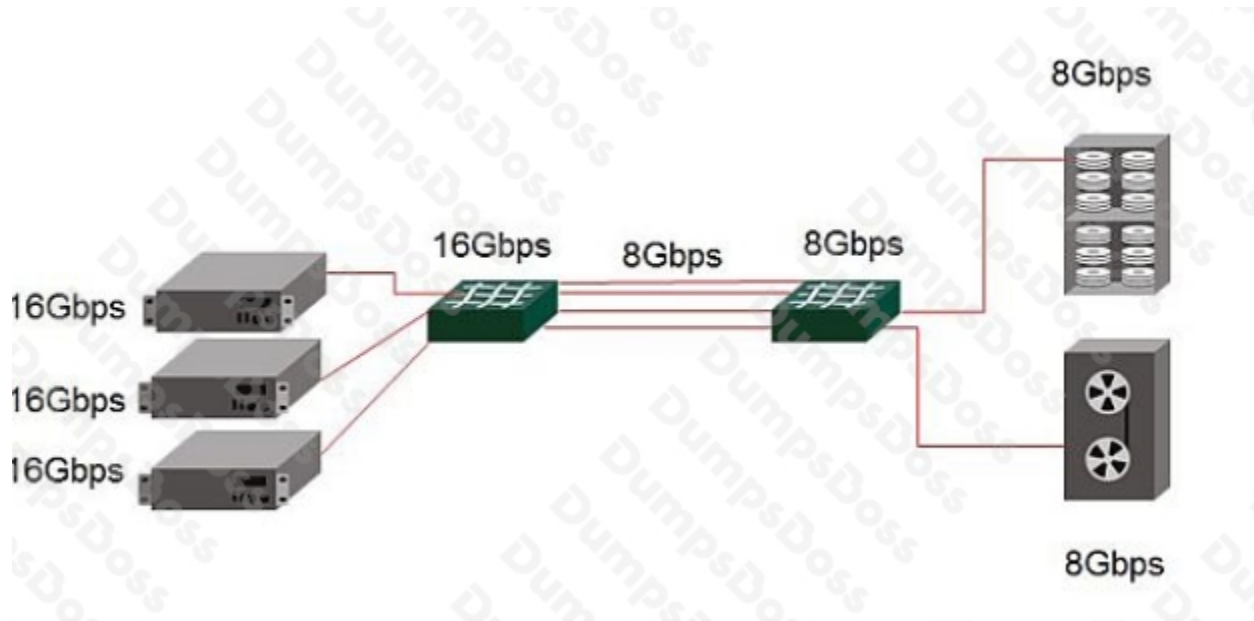
What will happen when the test is run?

- A. The DCX 8510-8 will perform loopback diagnostics only to the port on its own chassis.
- B. The DCX 8510-8 will ask the user for the test parameters to use, and then run, inline diagnostics.
- C. The DCX 8510-8 will segment from the fabric and all FC communication will stop on that ISL.
- D. The DCX 8510-8 will notify the user that the D\_Port test is only supported on the F\_Port.

**ANSWER: C**

#### QUESTION NO: 10

Refer to the exhibit.



You have installed a Brocade 6510 switch into a fabric with 8 Gbps devices. You begin experiencing bottlenecks on the 8 Gbps ports.

What would you do to correct this problem?

- A. Configure Ingress Rate Limiting on the 16 Gbps devices.
- B. Configure Target Rate Limiting on the 8 Gbps device ports.
- C. Configure Bottleneck Detection.
- D. Install an additional ISL between switches.

**ANSWER: A**