

# DUMPSBOSS.COM

## Windows Client

Microsoft MD-100

Version Demo

Total Demo Questions: 20

Total Premium Questions: 484

Buy Premium PDF

<https://dumpsboss.com>

[support@dumpsboss.com](mailto:support@dumpsboss.com)

dumpsboss.com

## Topic Break Down

Topic	No. of Questions
Topic 1, New Update	177
Topic 2, Case Study 1	2
Topic 3, Case Study 2	2
Topic 4, Case Study 3	4
Topic 5, Case Study 4	2
Topic 6, Case Study 5	3
Topic 7, Case Study 6	3
Topic 8, Case Study 7	2
Topic 9, Case Study 8	2
Topic 10, Case Study 9	3
Topic 11, Case Study 10	2
Topic 12, Mixed Questions	282
<b>Total</b>	<b>484</b>



**QUESTION NO: 1**

You have several computers that run Windows 10.

All users have Microsoft OneDrive for Business installed.

Users frequently save files to their desktop.

You need to ensure that all the users can recover the files on their desktop from OneDrive for Business.

Which two actions should you perform? Each correct answer presents part of the solution.

NOTE: Each correct selection is worth one point.

- A. Copy ADMX and ADML files to C:\Users\Public\Desktop\
- B. From Backup in the Settings app, add a drive
- C. Configure the Silently move Windows known folders to OneDrive settings
- D. Copy ADMX and ADML files to C:\Windows\PolicyDefinitions
- E. Configure the Save documents to OneDrive by default setting

**ANSWER: C D****Explanation:**

References: <https://docs.microsoft.com/en-us/onedrive/plan-onedrive-enterprise> <https://docs.microsoft.com/en-us/onedrive/use-group-policy#KFMOptInNoWizard>

**QUESTION NO: 2 - (HOTSPOT)****HOTSPOT**

Your network contains an Active Directory domain. The domain contains the users shown in the following table.

Name	Member of
User1	Group1
User2	Group2

You have a server named Server1 that runs Windows Server 2019 and has the Windows Deployment Services role installed. Server1 contains an x86 boot image and three Windows 10 install images. The install images are shown in the following table.

Name	Architecture	User permission
Image1	x64	Full control: Administrators, WDSServer
Image2	x64	Full control: Administrators Read: Group1
Image3	x86	Full control: Administrators, WDSServer Read: Group2

You purchase a computer named Computer1 that is compatible with the 64-bit version of Windows 10.

For each of the following statements, select Yes if the statement is true. Otherwise, select No.

NOTE: Each correct selection is worth one point.

**Hot Area:**

**Answer Area**

Statements	Yes	No
User1 can install Image1 on Computer1 by using Windows Deployment Services (WDS)	<input type="radio"/>	<input type="radio"/>
User1 can install Image2 on Computer1 by using Windows Deployment Services (WDS)	<input type="radio"/>	<input type="radio"/>
User2 can install Image3 on Computer1 by using Windows Deployment Services (WDS)	<input type="radio"/>	<input type="radio"/>

**ANSWER:**

**Answer Area**

Statements	Yes	No
User1 can install Image1 on Computer1 by using Windows Deployment Services (WDS)	<input type="radio"/>	<input checked="" type="radio"/>
User1 can install Image2 on Computer1 by using Windows Deployment Services (WDS)	<input type="radio"/>	<input checked="" type="radio"/>
User2 can install Image3 on Computer1 by using Windows Deployment Services (WDS)	<input type="radio"/>	<input checked="" type="radio"/>

**Explanation:**

Reference: <https://techdirectarchive.com/2020/09/14/error-0xc1510111-you-do-not-have-permissions-to-mount-and-modify-this-image/>

**QUESTION NO: 3**

You need to configure Device1 to meet the following requirements:

- Deny User1 the right to sign in locally.
- Ensure that a logon script runs only when User2 signs in to Device1.
- Ensure that no login scripts run when User1 or Admin1 sign in to Device1.

Which two policies should you modify? Each correct answer presents part of the solution. NOTE: Each correct selection is worth one point.

- A. Local Computer\Admin1 Policy
- B. Local Computer\Administrators Policy
- C. Local Computer\Non-Administrators Policy IS
- D. Local Computer\User1 Policy
- E. Local Computer\User2 Policy
- F. Local Computer Policy

**ANSWER: D E**

**QUESTION NO: 4 - (DRAG DROP)**

You have a computer that runs Windows 11 and has Windows Sandbox enabled.

You need to configure a Windows Sandbox environment. The solution must meet the following requirements:

- Support a virtual GPU.
- Mount the C:\Temp folder as read only.
- Prevent users from copying files to the sandbox by using the clipboard.

How should you complete the configuration file? To answer, drag the appropriate values to the correct targets. Each value may be used once, more than once, or not at all. You may need to drag the split bar between panes or scroll to view content.

Values	Answer Area
<input type="button" value="Default"/>	<code>&lt;Configuration&gt;</code>
<input type="button" value="Disable"/>	<code>&lt;Vgpu&gt; <input type="text" value=""/> &lt;/Vgpu&gt;</code>
<input type="button" value="Enable"/>	<code>&lt;Networking&gt;Disable&lt;/Networking&gt;</code>
<input type="button" value="False"/>	<code>&lt;MappedFolders&gt;</code>
<input type="button" value="True"/>	<code>&lt;MappedFolder&gt;</code>
	<code>&lt;HostFolder&gt;C:\temp&lt;/HostFolder&gt;</code>
	<code>&lt;ReadOnly&gt; <input type="text" value=""/> &lt;/ReadOnly&gt;</code>
	<code>&lt;/MappedFolder&gt;</code>
	<code>&lt;/MappedFolders&gt;</code>
	<code>&lt;LogonCommand&gt;</code>
	<code>&lt;Command&gt;C:\users\WDAGUtilityAccount\Desktop\Temp\startup.cmd&lt;/Command&gt;</code>
	<code>&lt;/LogonCommand&gt;</code>
	<code>&lt;ProtectedClient&gt; <input type="text" value=""/> &lt;/ProtectedClient&gt;</code>
	<code>&lt;ClipboardRedirection&gt;Default&lt;/ClipboardRedirection&gt;</code>

ANSWER:

Values	Answer Area
<input type="button" value="Default"/>	<code>&lt;Configuration&gt;</code>
<input type="button" value="Disable"/>	<code>&lt;Vgpu&gt; <input type="text" value="Enable"/> &lt;/Vgpu&gt;</code>
<input type="button" value="Enable"/>	<code>&lt;Networking&gt;Disable&lt;/Networking&gt;</code>
<input type="button" value="False"/>	<code>&lt;MappedFolders&gt;</code>
<input type="button" value="True"/>	<code>&lt;MappedFolder&gt;</code>
	<code>&lt;HostFolder&gt;C:\temp&lt;/HostFolder&gt;</code>
	<code>&lt;ReadOnly&gt; <input type="text" value="True"/> &lt;/ReadOnly&gt;</code>
	<code>&lt;/MappedFolder&gt;</code>
	<code>&lt;/MappedFolders&gt;</code>
	<code>&lt;LogonCommand&gt;</code>
	<code>&lt;Command&gt;C:\users\WDAGUtilityAccount\Desktop\Temp\startup.cmd&lt;/Command&gt;</code>
	<code>&lt;/LogonCommand&gt;</code>
	<code>&lt;ProtectedClient&gt; <input type="text" value="Disable"/> &lt;/ProtectedClient&gt;</code>
	<code>&lt;ClipboardRedirection&gt;Default&lt;/ClipboardRedirection&gt;</code>

Explanation:

Values	Answer Area
<input type="button" value="Default"/>	<code>&lt;Configuration&gt;</code>
<input type="button" value="Disable"/>	<code>&lt;VGpu&gt; <input type="button" value="Enable"/> &lt;/VGpu&gt;</code>
<input type="button" value="Enable"/>	<code>&lt;Networking&gt;Disable&lt;/Networking&gt;</code>
<input type="button" value="False"/>	<code>&lt;MappedFolders&gt;</code>
<input type="button" value="True"/>	<code>&lt;MappedFolder&gt;</code>
	<code>&lt;HostFolder&gt;C:\temp&lt;/HostFolder&gt;</code>
	<code>&lt;ReadOnly&gt; <input type="button" value="True"/> &lt;/ReadOnly&gt;</code>
	<code>&lt;/MappedFolder&gt;</code>
	<code>&lt;/MappedFolders&gt;</code>
	<code>&lt;LogonCommand&gt;</code>
	<code>&lt;Command&gt;C:\users\WDAGUtilityAccount\Desktop\Temp\startup.cmd&lt;/Command&gt;</code>
	<code>&lt;/LogonCommand&gt;</code>
	<code>&lt;ProtectedClient&gt; <input type="button" value="Disable"/> &lt;/ProtectedClient&gt;</code>
	<code>&lt;ClipboardRedirection&gt;Default&lt;/ClipboardRedirection&gt;</code>

## QUESTION NO: 5 - (SIMULATION)

### SIMULATION

Please wait while the virtual machine loads. Once loaded, you may proceed to the lab section. This may take a few minutes, and the wait time will not be deducted from your overall test time.

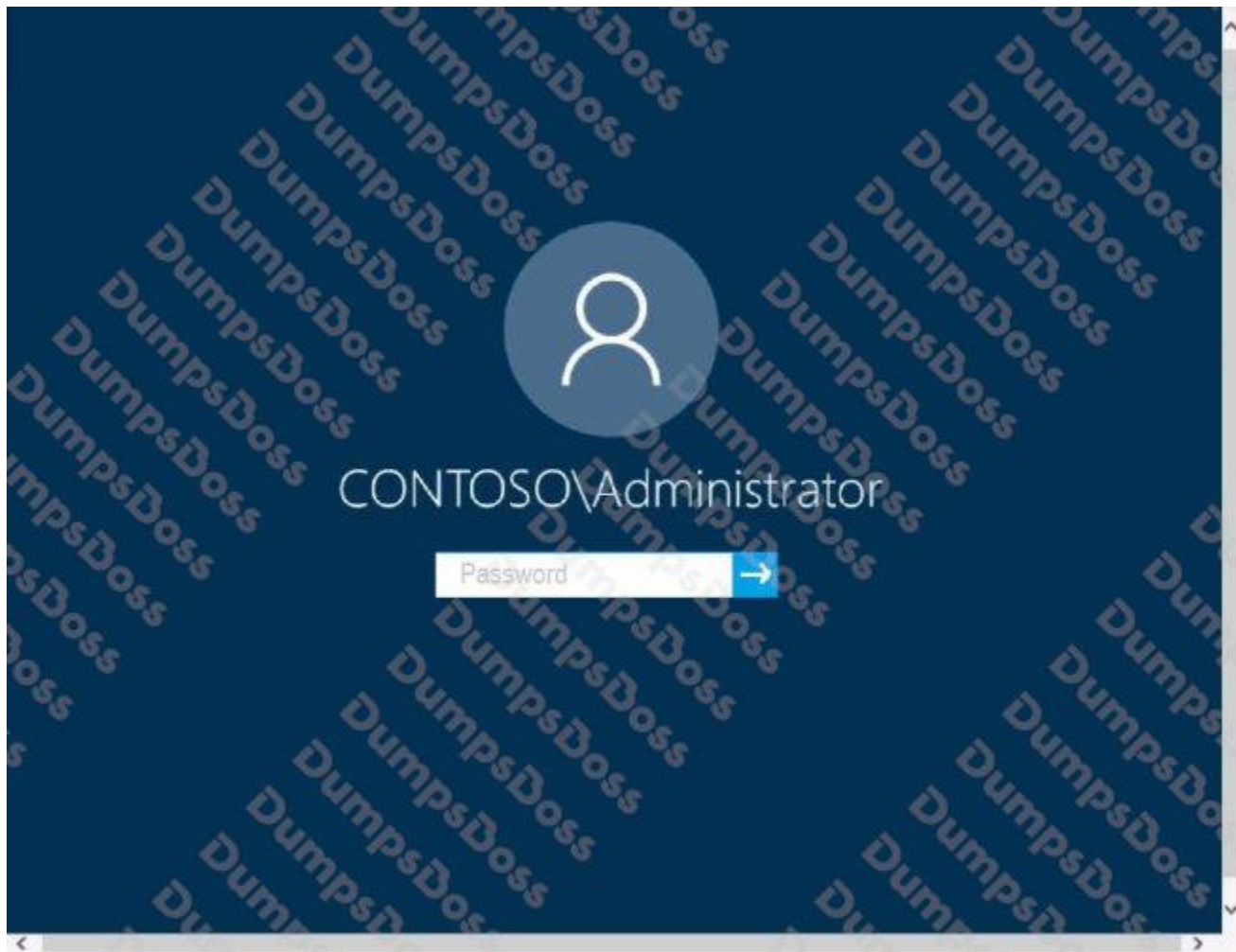
When the Next button is available, click it to access the lab section. In this section, you will perform a set of tasks in a live environment. While most functionality will be available to you as it would be in a live environment, some functionality (e.g., copy and paste, ability to navigate to external websites) will not be possible by design.

Scoring is based on the outcome of performing the tasks stated in the lab. In other words, it doesn't matter how you accomplish the task, if you successfully perform it, you will earn credit for that task.

Labs are not timed separately, and this exam may more than one lab that you must complete. You can use as much time as you would like to complete each lab. But, you should manage your time appropriately to ensure that you are able to complete the lab(s) and all other sections of the exam in the time provided.

Please note that once you submit your work by clicking the Next button within a lab, you will NOT be able to return to the lab. Username and password





Use the following login credentials as needed:

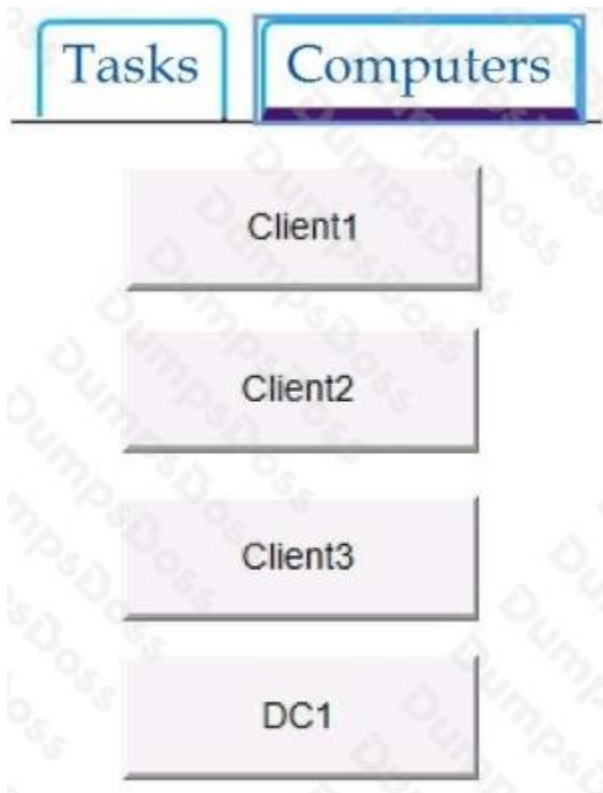
To enter your password, place your cursor in the Enter password box and click on the password below.

Username: Contoso/Administrator Password: Passw0rd!

The following information is for technical support purposes only:

Lab Instance: 10921597





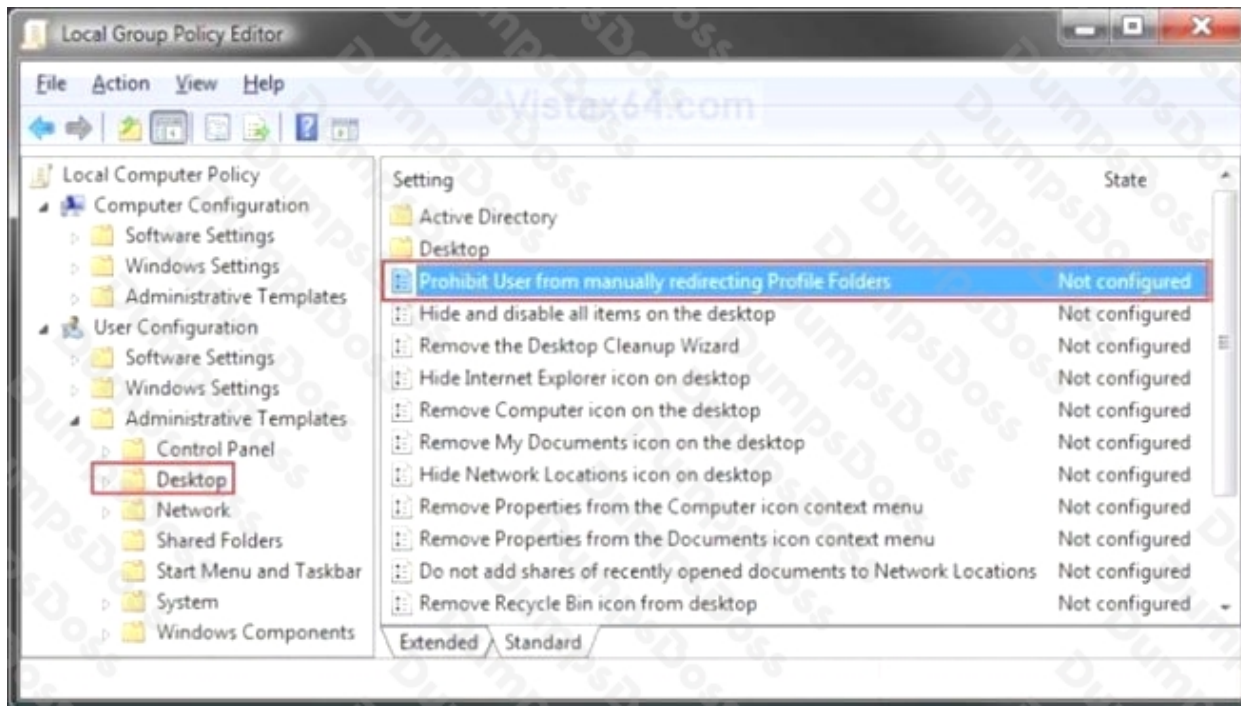
You need to enable the Prohibit User from manually redirecting Profile Folders Group Policy setting only for the administrative users of Client3.

To complete this task, sign in to the required computer or computers.

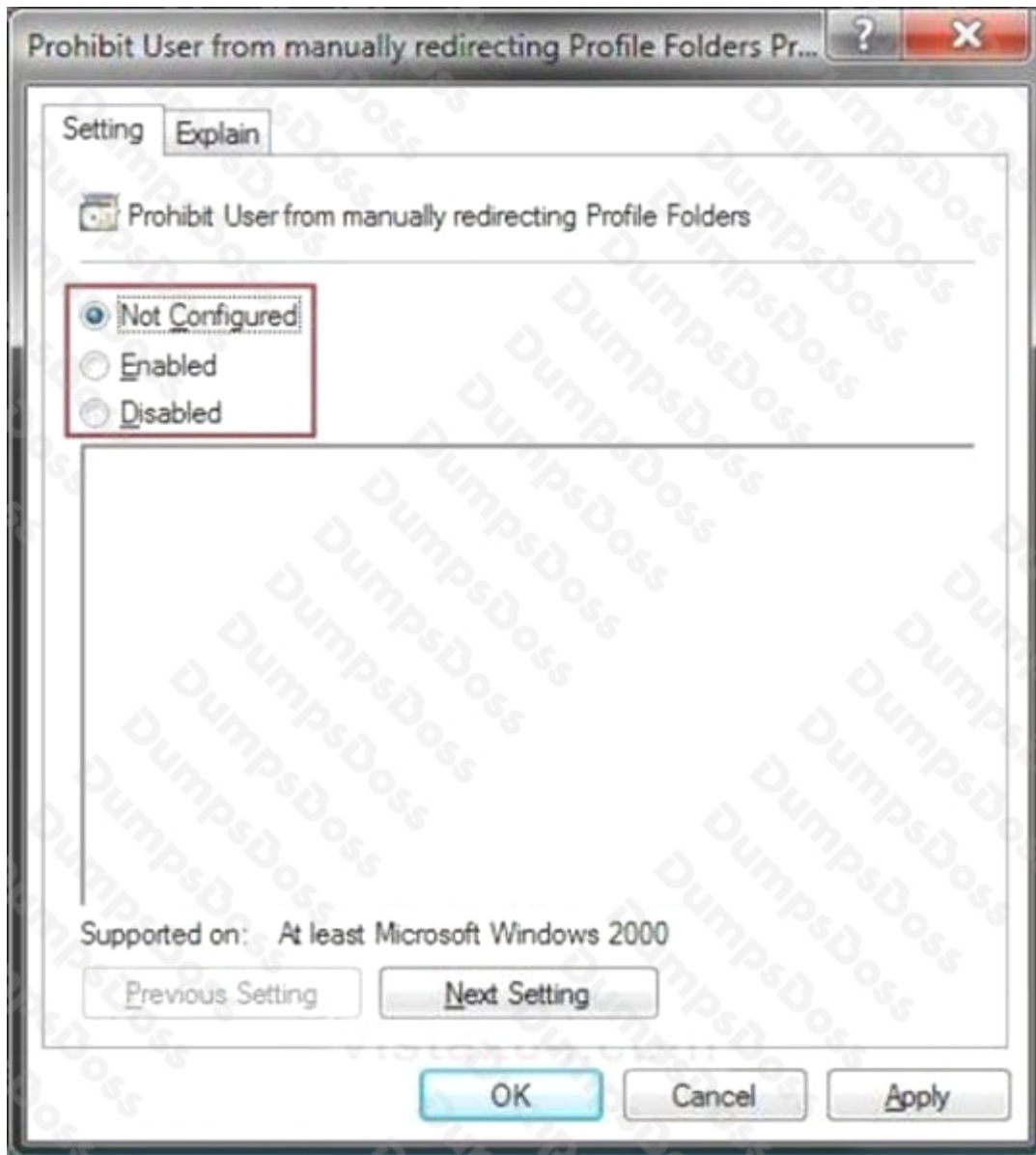
**ANSWER: See explanation below.**

**Explanation:**

1. Open the Administrator Group Local Group Policy Editor.
2. In the left pane, click on User Configuration, Administrative Templates, and Desktop.



3. In the right pane, right click on Prohibit User from Manually redirecting Profile Folders and click on Properties. 4. To Prevent User Profile Folders Location Change Select (dot) Enabled and click on OK.



5. Close the Local Group Policy Editor window.

References: <https://www.vistax64.com/threads/user-profile-folders-prevent-or-allow-location-change.180719/>

### QUESTION NO: 6

You have a computer named Computer1 that runs Windows 10.

You are troubleshooting connectivity issues on Computer1.

You need to view the remote addresses to which Computer1 has active TCP connections.

Which tool should you use?

**A.** Performance Monitor



- B. Task Manager
- C. Resource Monitor
- D. Windows Defender Firewall with Advanced Security

**ANSWER: C**

#### QUESTION NO: 7

You have a computer named Computer1 that runs Windows 10.

Several users have signed in to Computer1 and have a profile.

You create a taskbar modification file named LayoutModification.xml.

You need to ensure that LayoutModification.xml will apply to all users who sign in to Computer1.

To which folder should you copy LayoutModification.xml?

- A. C:\Users\Public\Public Desktop
- B. C:\Windows\ShellExperiences
- C. C:\Users\Default\AppData\Local\Microsoft\Windows\Shell\
- D. C:\Windows\System32\Configuration

**ANSWER: C**

**Explanation:**

Reference:

<https://docs.microsoft.com/en-us/windows/configuration/start-layout-xml-desktop>

#### QUESTION NO: 8

You have 200 computers that run Windows 10 and are joined to an Active Directory domain.

You need to enable Windows Remote Management (WinRM) on all the computers by using Group Policy.

Which three actions should you perform? Each correct answer presents part of the solution.

NOTE: Each correct selection is worth one point.

- A. Set the Startup Type of the Windows Remote Management (WS-Management) service to Automatic.
- B. Enable the Windows Defender Firewall: Allow inbound Remote Desktop exceptions setting.
- C. Enable the Allow remote server management through WinRM setting.

D. Enable the Windows Defender Firewall: Allow inbound remote administration exception setting.

E. Enable the Allow Remote Shell access setting.

F. Set the Startup Type of the Remote Registry service to Automatic.

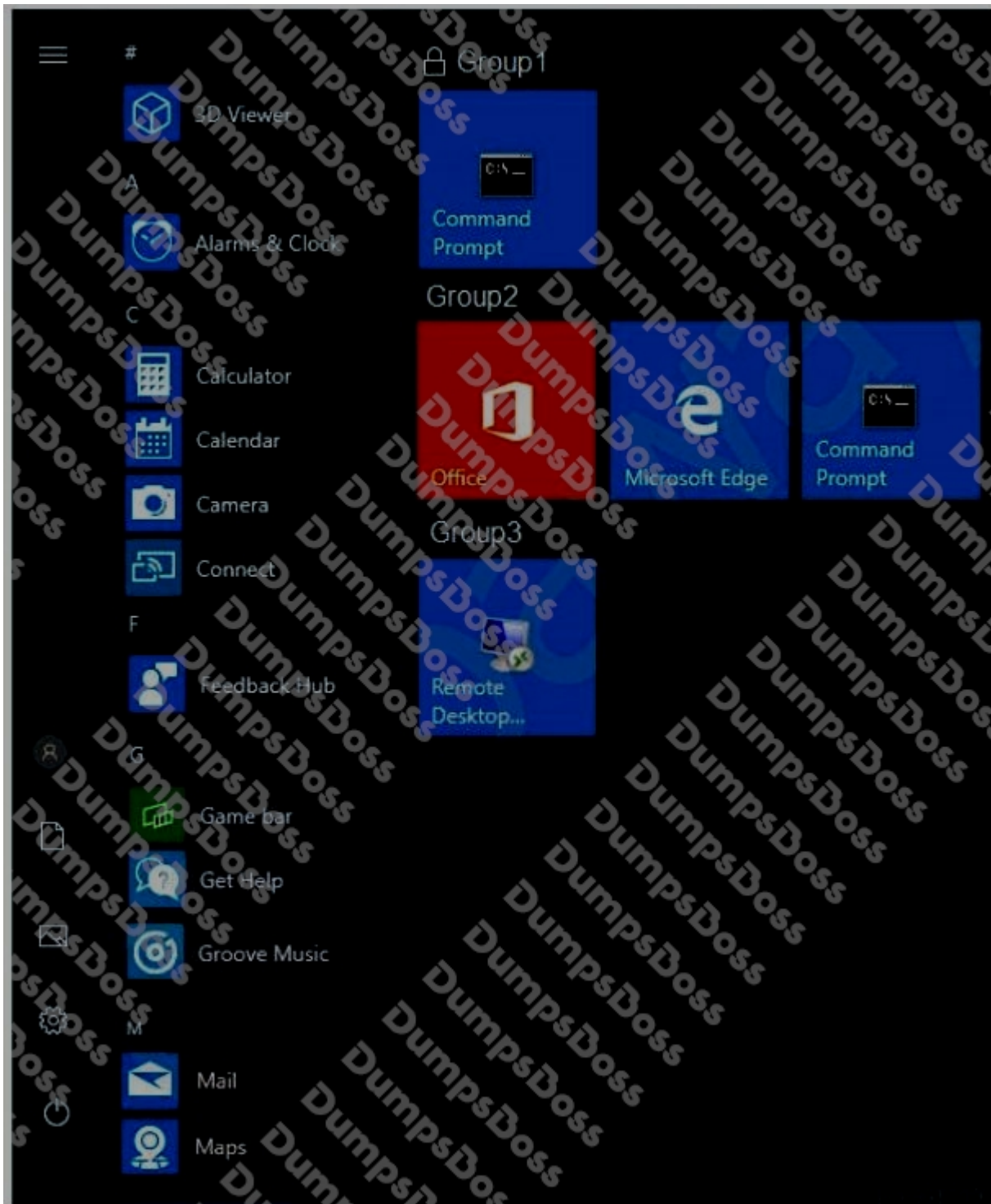
**ANSWER: A C D**

**Explanation:**

References: <http://www.mustbegeek.com/how-to-enable-winrm-via-group-policy/>

### **QUESTION NO: 9**

You customize the Start menu on a computer that runs Windows 10 as shown in the following exhibit.



You need to add Remote Desktop Connection to Group1 and remove Group3 from the Start menu.

Which two actions should you perform from the Start menu customizations? Each correct answer presents part of the solution.

NOTE: Each correct selection is worth one point.

**A.** Unlock Group1.



- B. Remove Command Prompt from Group1.
- C. Delete Group3.
- D. Add Remote Desktop Connection to Group1.
- E. Rename Group3 as Group1.

**ANSWER: A D**

**Explanation:**

A: You have to unlock Group1 before you can make any changes to it.

D: If you drag the Remote Desktop Connection from Group3 to Group1, Group3 will disappear.

**QUESTION NO: 10**

Your network contains an Active Directory domain. The domain contains a computer named Computer1 that runs Windows 10.

You need to view the settings to Computer1 by Group Policy objects (GPOs) in the domain and local Group Policies.

Which command should you run?

- A. gpresult
- B. secedit
- C. gpupdate
- D. gpfixup

**ANSWER: A**

**Explanation:**

References: <https://docs.microsoft.com/en-us/windows-server/administration/windows-commands/gpresult>

**QUESTION NO: 11**

You have a computer named Computer1 that runs Windows 10. Computer1 contains a folder named Folder1.

You need to log any users who take ownership of the files in Folder1.

Which two actions should you perform? Each correct answer presents part of the solution.

NOTE: Each correct selection is worth one point.

- A. Modify the folder attributes of Folder1.

- B. Modify the Advanced Security Settings for Folder1.
- C. From a Group Policy object (GPO), configure the Audit Sensitive Privilege Use setting.
- D. From a Group Policy object (GPO), configure the Audit File System setting.
- E. Install the Remote Server Administration Tools (RSAT).

**ANSWER: B C**

**Explanation:**

References: <https://docs.microsoft.com/en-us/windows/security/threat-protection/auditing/audit-sensitive-privilege-use>

**QUESTION NO: 12**

You manage devices that run Windows 10.

Ten sales users will travel to a location that has limited bandwidth that is expensive. The sales users will be at the location for three weeks.

You need to prevent all Windows updates from downloading for the duration of the trip. The solution must not prevent access to email and the Internet.

What should you do?

- A. From Network & Internet in the Settings app, set a data limit.
- B. From Accounts in the Settings app, turn off Sync settings.
- C. From Network & Internet in the Settings app, set the network connections as metered connections.
- D. From Update & Security in the Settings app, pause updates.

**ANSWER: C**

**QUESTION NO: 13**

You need to meet the quality update requirement for ComputerA.

For how long should you defer the updates?

- A. 14 days
- B. 10 years
- C. 5 years
- D. 180 days

E. 30 days

**ANSWER: B**

**Explanation:**

The LTSC servicing model prevents Windows 10 Enterprise LTSC devices from receiving the usual feature updates and provides only quality updates to ensure that device security stays up to date. It typically offers new LTSC releases every 2–3 years, and organizations can choose to install them as in-place upgrades or even skip releases over a 10-year life cycle.

References: <https://docs.microsoft.com/en-us/windows/deployment/update/waas-overview>

**QUESTION NO: 14**

Your network contains an Active Directory domain. The domain contains 10 computers that run Windows 10.

On a different computer named Computer1, you plan to create a collector-initiated subscription to gather the event logs from the Windows 10 computers.

You need to configure the environment to support the event log collection.

Which two actions should you perform? Each correct answer presents part of the solution.

NOTE: Each correct selection is worth one point.

- A. Add Computer1 to the Event Log Readers group on the Windows 10 computers
- B. Add Computer1 to the Event Log Readers group on Computer1
- C. On the Windows 10 computers, change the Startup Type of Windows Event Collector to Automatic
- D. Enable Windows Remote Management (WinRM) on the Windows 10 computers
- E. Enable Windows Remote Management (WinRM) on Computer1

**ANSWER: A D**

**Explanation:**

Reference:

[https://docs.microsoft.com/en-us/previous-versions/windows/it-pro/windows-server-2008-R2-and-2008/cc748890\(v=ws.11\)](https://docs.microsoft.com/en-us/previous-versions/windows/it-pro/windows-server-2008-R2-and-2008/cc748890(v=ws.11))

**QUESTION NO: 15 - (DRAG DROP)**

You have a computer that runs Windows 10 and has the Windows Assessment and Deployment Kit (Windows ADK) installed. You need to perform the following tasks:

- Prepare a Windows PE (WinPE) working directory.



- Add scripting support to a WinPE image.
- Mount and unmount a WinPE image.

Which command should you use for each task? To answer, drag the appropriate commands to the correct tasks. Each command may be used once, more than once, or not at all. You may need to drag the split bar between panes or scroll to view content.

Commands	Answer Area
dism.exe	Prepare a WinPE working directory: Command
copyype.cmd	Mount and unmount a WinPE image: Command
mount.exe	Add scripting support to a WinPE image: Command
diskpart.exe	

**ANSWER:**

Commands	Answer Area
dism.exe	Prepare a WinPE working directory: copyype.cmd
copyype.cmd	Mount and unmount a WinPE image: dism.exe
mount.exe	Add scripting support to a WinPE image: mount.exe
diskpart.exe	

**Explanation:**

Copyype.cmd

Dism.exe

Mount.exe

#### QUESTION NO: 16 - (HOTSPOT)

HOTSPOT

You have a workgroup computer named Computer1 that runs Windows 10 and has the users shown in the following table.

Name	Member of
User1	Users
User2	Users, Administrators

Computer1 contains an image file named C:\Folder\Image.jpg.

Computer1 has the Local Computer\Administrators Policy shown in the following table.

Setting	State
Remove Recycle Bin icon from desktop	Not configured
Desktop Wallpaper	Disabled

Computer1 has the Local Computer\Non-Administrators Policy shown in the following table.

Setting	State	Path
Remove Recycle Bin icon from desktop	Enabled	<i>Not applicable</i>
Desktop Wallpaper	Enabled	C:\Folder\Image.jpg

Computer1 has the local computer policy shown in the following table.

Setting	State
Remove Recycle Bin icon from desktop	Disabled
Desktop Wallpaper	Not configured

For each of the following statements, select Yes if the statement is true. Otherwise, select No.

NOTE: Each correct selection is worth one point.

Hot Area:

Answer Area

Statements

Yes

No

User1 can change the desktop wallpaper.

☐☐

User2 has the Recycle Bin on the desktop.

☐☐

User1 has the Recycle Bin on the desktop.

☐☐

ANSWER:

**Answer Area****Statements****Yes****No**

User1 can change the desktop wallpaper.

☐☒

User2 has the Recycle Bin on the desktop.

☒☐

User1 has the Recycle Bin on the desktop.

☐☒**Explanation:**

Box 1: No

The Desktop Wallpaper setting in the Local Computer\Non-Administrators Policy specifies the path to the wallpaper image. Therefore, User1 will not be able to change the wallpaper.

Box 2: Yes

The Remove Recycle Bin from desktop setting in the Local Computer\Administrators Policy is Not Configured which means it will not overwrite the setting in the Local Computer Policy. The Remove Recycle Bin from desktop setting in the Local Computer Policy is Disabled. Therefore, the Recycle Bin icon is not removed. In other words, it will be visible on the desktop.

Box 3: No

The Remove Recycle Bin from desktop setting in the Local Computer\Non-Administrators Policy is enabled. Therefore, the Recycle Bin will be removed for User1.

**QUESTION NO: 17**

Your network contains an Active Directory domain. The domain contains a computer named Computer 1 that runs Windows 10. You need to be able to reset computer accounts from Computer1. What should you do first?

- A. From Windows Defender Firewall, allow Windows Remote Management
- B. Add the RSAT: Active Directory Domain Services and Lightweight Directory Services Tools optional feature.
- C. From Windows Defender Firewall, allow Remote Service Management
- D. Add the RSAT: Server Manager optional feature.

**ANSWER: B****QUESTION NO: 18 - (SIMULATION)**

SIMULATION



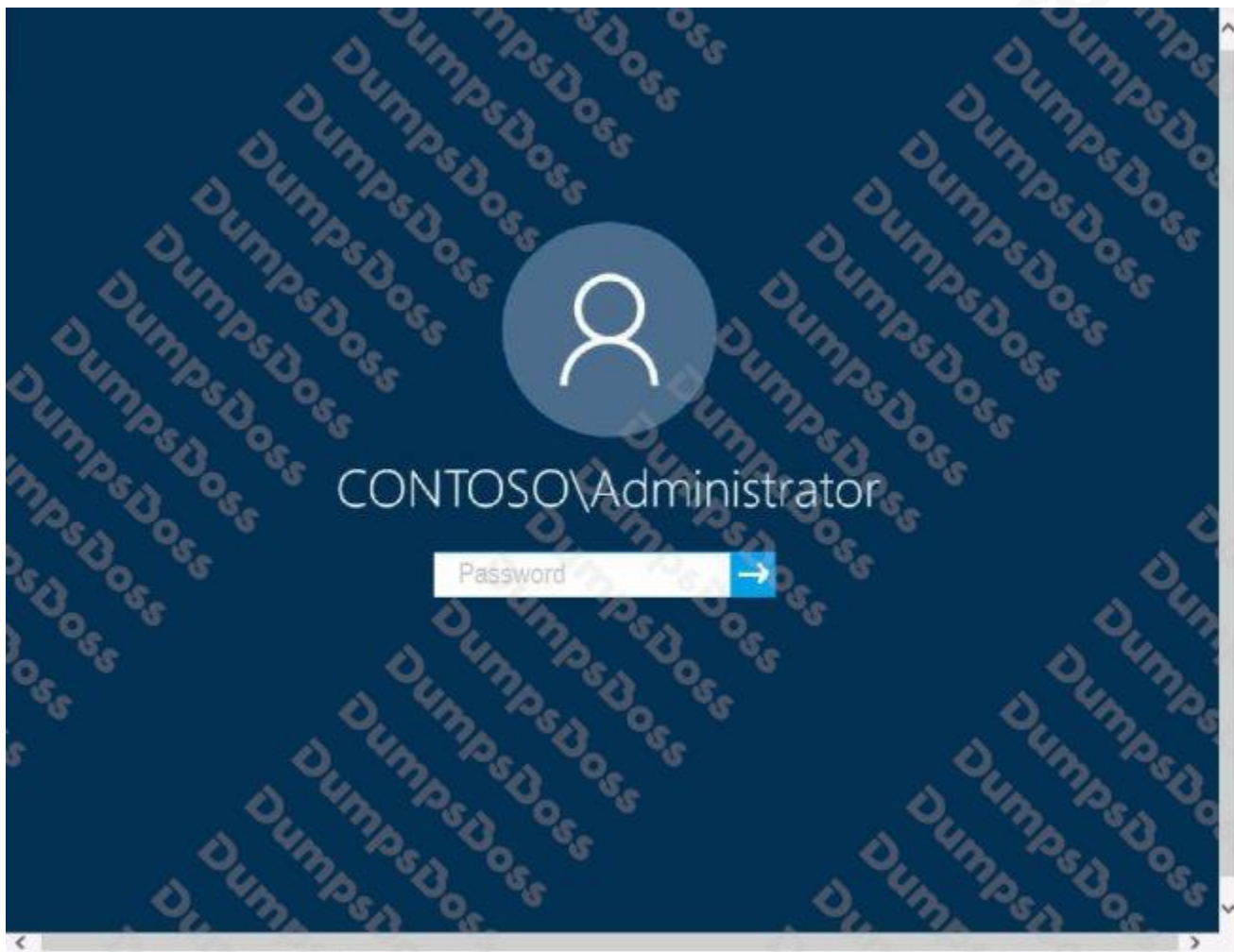
Please wait while the virtual machine loads. Once loaded, you may proceed to the lab section. This may take a few minutes, and the wait time will not be deducted from your overall test time.

When the Next button is available, click it to access the lab section. In this section, you will perform a set of tasks in a live environment. While most functionality will be available to you as it would be in a live environment, some functionality (e.g., copy and paste, ability to navigate to external websites) will not be possible by design.

Scoring is based on the outcome of performing the tasks stated in the lab. In other words, it doesn't matter how you accomplish the task, if you successfully perform it, you will earn credit for that task.

Labs are not timed separately, and this exam may more than one lab that you must complete. You can use as much time as you would like to complete each lab. But, you should manage your time appropriately to ensure that you are able to complete the lab(s) and all other sections of the exam in the time provided.

Please note that once you submit your work by clicking the Next button within a lab, you will NOT be able to return to the lab. Username and password



Use the following login credentials as needed:

To enter your password, place your cursor in the Enter password box and click on the password below.

Username: Contoso/Administrator Password: Passw0rd!

The following information is for technical support purposes only:

Lab Instance: 11145882

**Dashboard**

- Local Server
- All Servers
- AD DS
- DNS
- File and Storage Services

### WELCOME TO SERVER MANAGER

**QUICK START**

- 1 Configure this local server
- 2 Add roles and features
- 3 Add other servers to manage
- 4 Create a server group
- 5 Connect this server to cloud services

**WHAT'S NEW**

**LEARN MORE**

**ROLES AND SERVER GROUPS**

Roles: 3 | Server groups: 1 | Servers total: 1

**AD DS** 1

- Manageability
- Events
- Services
- Performance
- BPA results

**DNS** 1

- Manageability
- Events
- Services
- Performance
- BPA results

**File and Storage Services** 1

- Manageability
- Events
- Services
- Performance
- BPA results

**Local Server** 1

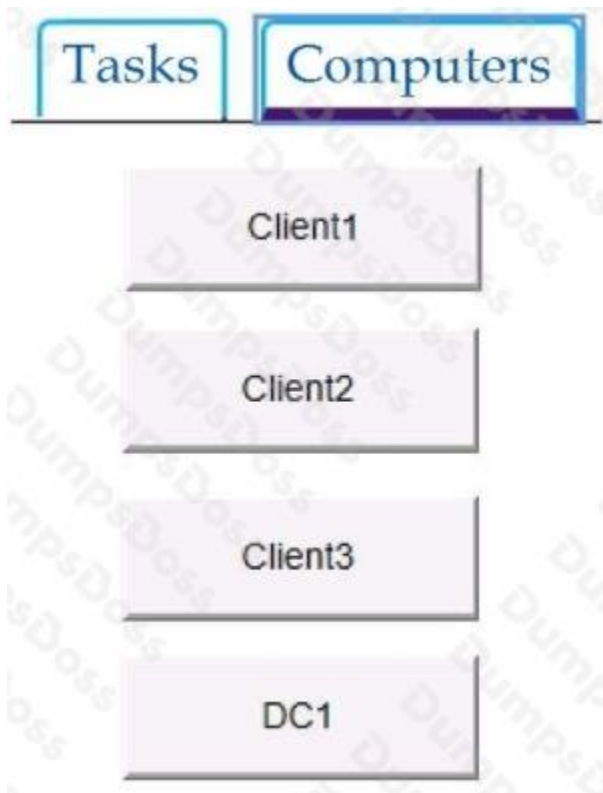
- Manageability
- Events
- 2 Services
- Performance
- BPA results

1/23/2020 9:30 PM

**All Servers** 1

- Manageability
- Events
- 2 Services
- Performance
- BPA results

1/23/2020 9:30 PM



You need to create an HTML report that shows which policies and policy settings are applied to CONTOSO\User1 on Client1. You must save the output to a file named Report.html in a folder named Folder1 on the C drive of Client1.

To complete this task, sign in to the required computer or computers.

**ANSWER: See explanation below.**

**Explanation:**

On Client1, log in as administrator. Open command prompt and type: gpresult /h CONTOSO\User1\C:\Folder1\Report.html

Reference: [https://www.google.co.za/search?biw=1366&bih=614&sxsrf=ALeKk01XD\\_luAn4X-bIMlUjpYBm0i7btQ%3A1592996005097&ei=pTDzXqLCBaif1fAP1NODqAY&q=gpresult+%2Fh+report.html](https://www.google.co.za/search?biw=1366&bih=614&sxsrf=ALeKk01XD_luAn4X-bIMlUjpYBm0i7btQ%3A1592996005097&ei=pTDzXqLCBaif1fAP1NODqAY&q=gpresult+%2Fh+report.html)

+location&oq=gpresult+html+report

+&gs\_lcp=CgZwc3ktYWIQARgEMgIIADICCAAYBggAEBYQHjIGCAAQFhAeMgYIABAWEB4yBggAEBYQHjIGCAAQFhAeMgYIABAWEB4yCAgAEBYQChAeMgYIABAWEB46BAgAEEdQyOUUnWMjIJ2CRhihoAHACeACAAZIDiAGSA5IBAZQtMZgBAKABAAoBB2d3cy13aXo&sclient=psy-ab

**QUESTION NO: 19**

Your network contains an Active Directory domain. The domain contains two computers named Computer1 and Computer2 that run Windows 10.

You need to modify the registry of Computer1 by using Registry Editor from Computer2.

Which two registry hives can you modify? Each correct answer presents part of the solution.

NOTE: Each correct selection is worth one point.

- A. HKEY\_CURRENT\_USER
- B. HKEY\_LOCAL\_MACHINE
- C. HKEY\_USERS
- D. HKEY\_CLASSES\_ROOT
- E. HKEY\_CURRENT\_CONFIG

**ANSWER: B C**

#### QUESTION NO: 20

Your network contains an Active Directory domain. The domain contains 1,000 computers that run Windows 10.

You discover a known compatibility issue between a feature update and a device driver on the computers.

You need to test the installation of the feature update on a test computer.

Which Windows Update setting should you configure by using a Group Policy Object (GPO)?

- A. Automatic Updates detection frequency
- B. Disable safeguards for Feature Updates
- C. Select the target Feature Update version
- D. Reschedule Automatic Updates scheduled installations

**ANSWER: B**

#### Explanation:

Reference: <https://docs.microsoft.com/en-us/windows/deployment/update/safeguard-opt-out>