

DUMPSBOSS.COM

CompTIA Cloud+ (CV0-002)

CompTIA CV0-002

Version Demo

Total Demo Questions: 15

Total Premium Questions: 352

Buy Premium PDF

<https://dumpsboss.com>

support@dumpsboss.com

dumpsboss.com

QUESTION NO: 1

A customer wants to schedule a backup job that compares and saves changes from the last full backup. Which of the following backup types should be used?

- A. Differential
- B. Full
- C. Clone
- D. Incremental

ANSWER: A**Explanation:**

Reference: <http://www.backup4all.com/kb/backup-types-115.html>

QUESTION NO: 2

Government agencies currently operate their own websites, each with its own directory services. There is a mandate to minimize IT administration.

Which of the following should the cloud services architect choose to BEST meet this mandate?

- A. Set up a direct VPN tunnel between the government sites.
- B. Upgrade all stand-alone systems to use mobile technologies.
- C. Upgrade the operating systems on all of the web servers.
- D. Reengineer the identification and authorization process.

ANSWER: D**QUESTION NO: 3**

In a private cloud environment, which of the following is the BEST way to update 20 VMs with the same patch that has been regression tested and approved for rollout?

- A. Automate the distribution of the patch and use an orchestration tool to roll it out.
- B. Roll out the patch manually to the 20 VMs and reboot the system.
- C. Deploy the patch to ten VMs for testing and then install it on the remaining VMs.

D. Install the patch on as many VMs as possible during the next maintenance window.

ANSWER: A

QUESTION NO: 4

With increased traffic to a website, several outages have occurred due to a log files filling the root drive of the web servers. An administrator is considering several possible solutions to prevent future outages.

Which of the following techniques is MOST likely to impact server performance if implemented?

- A. Archiving logs.
- B. Clearing logs.
- C. Log redirection.
- D. Drive compression.

ANSWER: B

QUESTION NO: 5

A new application with availability SLA requirements of 99.99% has been deployed in a cloud. For a test spanning a month, which of the following unavailability times would mean the test was successful? (Select two).

- A. 1 minute
- B. 4 minutes
- C. 10 minutes
- D. 30 minutes
- E. 60 minutes

ANSWER: A B

QUESTION NO: 6

A recent advertisement campaign has increased traffic to an e-commerce application that is hosted within a public cloud environment. Customers are reporting that it takes too long to load their pages and submit orders. A cloud administrator looks at the metrics from the environment and sees high utilization of the CPU and memory resources. The cloud provider offers several preconfigured sizes for server template: x-small, small, medium, large, x-large, and 2x-large.

| Server Name | Role | Server Template Size | Peak CPU Usage | Peak Memory Usage |
|-------------|-------------|----------------------|----------------|-------------------|
| Inxw001 | web | medium | 40% | 45% |
| Inxpc002 | application | 2x-large | 85% | 90% |
| Inxpc003 | application | x-large | 95% | 95% |
| Inxpc004 | application | 2x-large | 85% | 85% |

Given an expected increase in workload, which of the following is the BEST solution to improve application performance?

- A. Change the server template size for Inxpc003 to 2x-large.
- B. Provision additional Inxpc servers using the 2x-large template.
- C. Add memory to Inxpc002, Inxpc003, and Inxpc003.
- D. Change the role of Inxw001 from web to application.

ANSWER: A

QUESTION NO: 7

A company is consuming a SaaS solution with a large user base and wants to minimize user management, but also ensure access is as secure as possible. Which of the following should the cloud administrator select to help meet these requirements? (Choose two.)

- A. MFA
- B. ACL
- C. AAA
- D. SSO
- E. NAC

ANSWER: A D

QUESTION NO: 8

A company has been migrating a significant number of its on-premises applications to various SaaS providers. The IT department has noticed the following:

1. User account management has become challenging.
2. User account compromises have increased.
3. Accessing various SaaS applications is challenging.

Which of the following should the IT security department implement to BEST resolve the issue? (Choose three.)

- A. Single sign-on
- B. Multifactor authentication
- C. Network intrusion prevention system
- D. Password synchronization
- E. Federation
- F. IPSec tunnel to the SaaS providers
- G. VPN to SaaS providers

ANSWER: B D E

QUESTION NO: 9

It is taking an unusually long time for a financial division to run monthly reports on its SaaS-based, multitenant application. The cloud provider has grown exponentially, and more financial industry clients have moved their processing to the SaaS provider.

Which of the following is the MOST probable cause of the issue?

- A. The SSL certificate used by the SaaS provider has expired and is no longer valid.
- B. Some of the new tenants are not from the financial industry and are causing data integrity issues.
- C. The CSP did not keep up with the growth and the appropriate supporting infrastructure.
- D. The licensing limit has been exceeded on the SaaS-based, multitenant application server.

ANSWER: D

QUESTION NO: 10

A cloud administrator is tasked with ensuring redundancy and high availability of an IaaS cloud platform environment. The administrator is given the following requirements:

- Two web servers must share the same configurations and service client connections evenly.
- Two database servers must share data and configurations, with only one being used at a time.

Given the above, which of the following should the administrator propose to BEST meet these requirements? (Select two).

- A. The web server should be configured with a round-robin DNS with a CNAME record.
- B. The web server should be configured with a load balancer with a virtual IP address.

- C. The database server should be configured as an active-active cluster.
- D. The database server should be configured as an active-passive cluster.
- E. The availability aspect of the request does not currently exist in the IaaS cloud platform.
- F. The redundancy aspect of the request does not currently exist in the IaaS cloud platform.

ANSWER: A D

QUESTION NO: 11 - (DRAG DROP)

DRAG DROP A hosted file share was infected with CryptoLocker and now root cause analysis needs to be performed. Place the tasks in the correct order according to the troubleshooting methodology.

Select and Place:

| | | |
|---|--|---|
| 1 | | Establish a plan of action to resolve the problem and implement remediation |
| 2 | | Establish a theory of probable cause |
| 3 | | Document findings and outcomes |
| 4 | | Identify the problem |
| 5 | | Test the theory to determine cause |
| 6 | | Verify full system functionality |

ANSWER:

| | | |
|---|---|--|
| 1 | Identify the problem | |
| 2 | Establish a theory of probable cause | |
| 3 | Test the theory to determine cause | |
| 4 | Establish a plan of action to resolve the problem and implement remediation | |
| 5 | Verify full system functionality | |
| 6 | Document findings and outcomes | |

Explanation:

QUESTION NO: 12 - (SIMULATION)

SIMULATION

A company has decided to scale its e-commerce application from its corporate datacenter to a commercial cloud provider to meet an anticipated increase in demand during an upcoming holiday. The majority of the application load takes place on the application server under normal conditions. For this reason, the company decides to deploy additional application servers into a commercial cloud provider using the on-premises orchestration engine that installs and configures common software and network configurations. The remote computing environment is connected to the on-premises datacenter via a site-to-site IPsec tunnel. The external DNS provider has been configured to use weighted round-robin routing to load balance connections from the Internet.

During testing, the company discovers that only 20% of connections completed successfully.

Review the network architecture and supporting documents and fulfill these requirements:

Part 1:

1. Analyze the configuration of the following components: DNS, Firewall1, Firewall2, Router1, Router2, VPN and Orchestrator Server.
2. Identify the problematic device(s).

Part 2:

3. Identify the correct options to provide adequate configuration for hybrid cloud architecture.

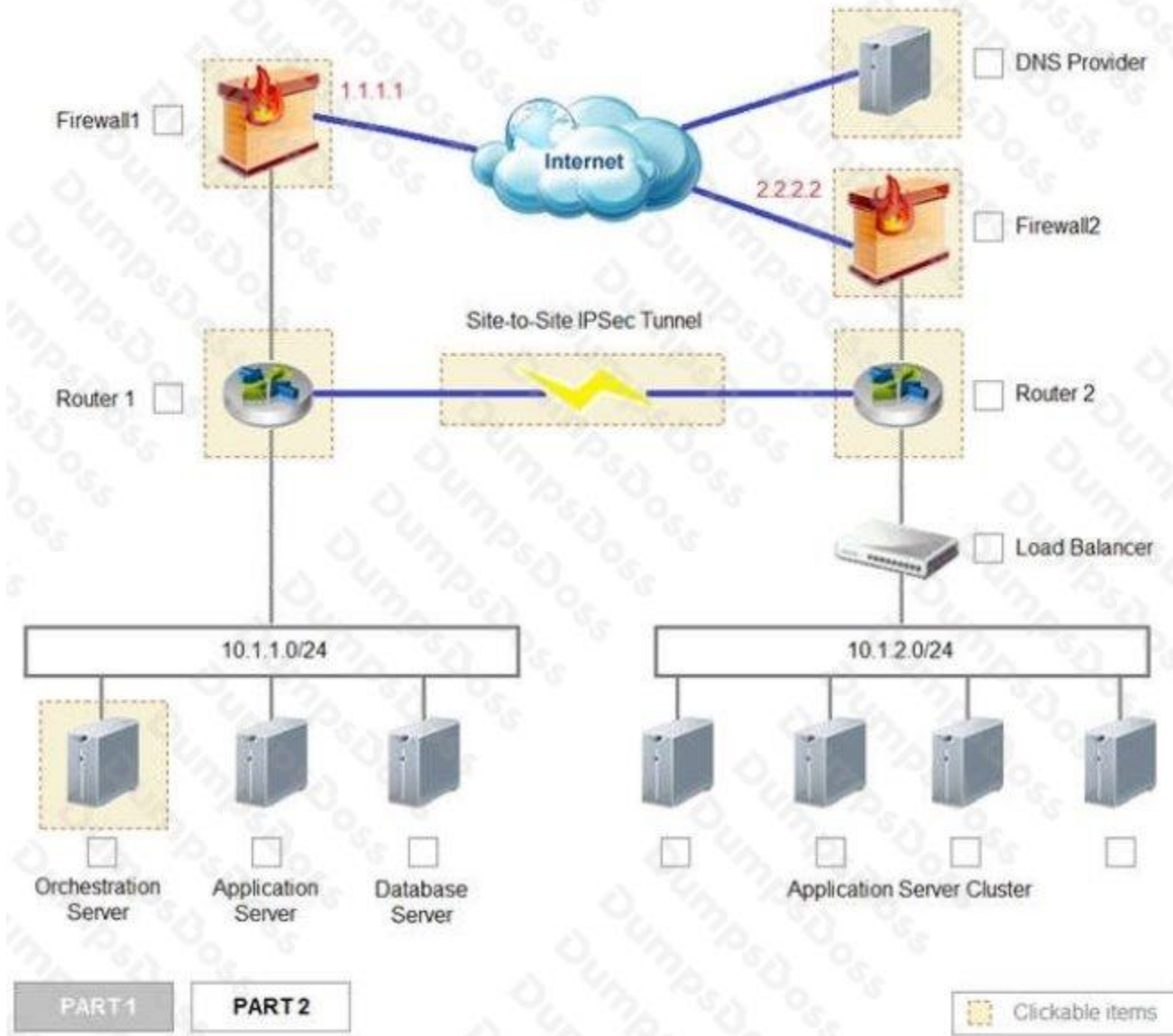
Instructions:

If at any time you would like to bring back the initial state of the simulation, please select the Reset button. When you have completed the simulation, please select the Done button to submit. Once the simulation is submitted, please select the Next button to continue.

Simulation

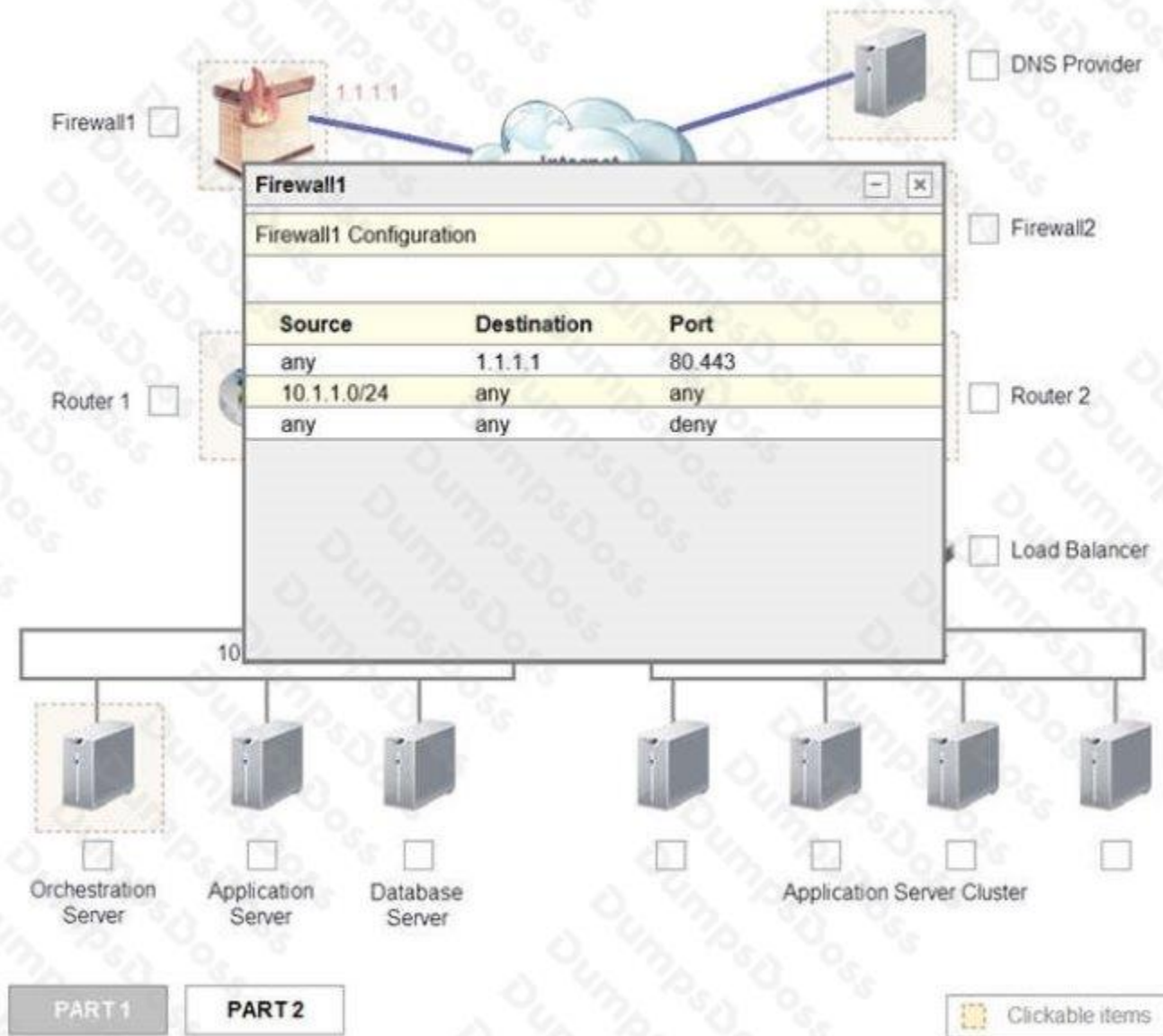
PART 1

Instruction: Click on each device to review more information of DNS, Firewall1, Firewall2, Router1, Router2, VPN and Orchestration Server.



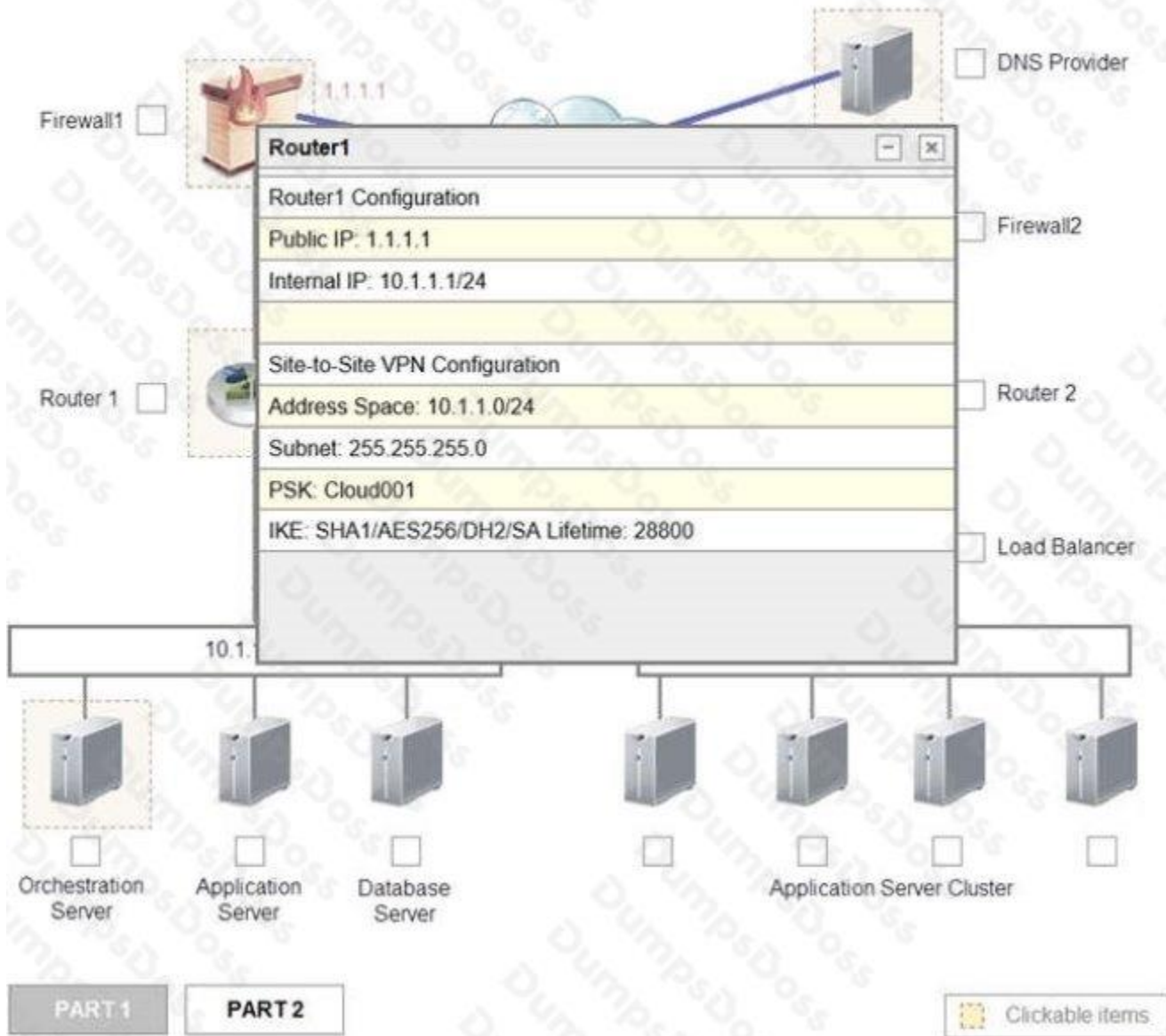
PART 1

Instruction: Click on each device to review more information of DNS, Firewall1, Firewall2, Router1, Router2, VPN and Orchestration Server.



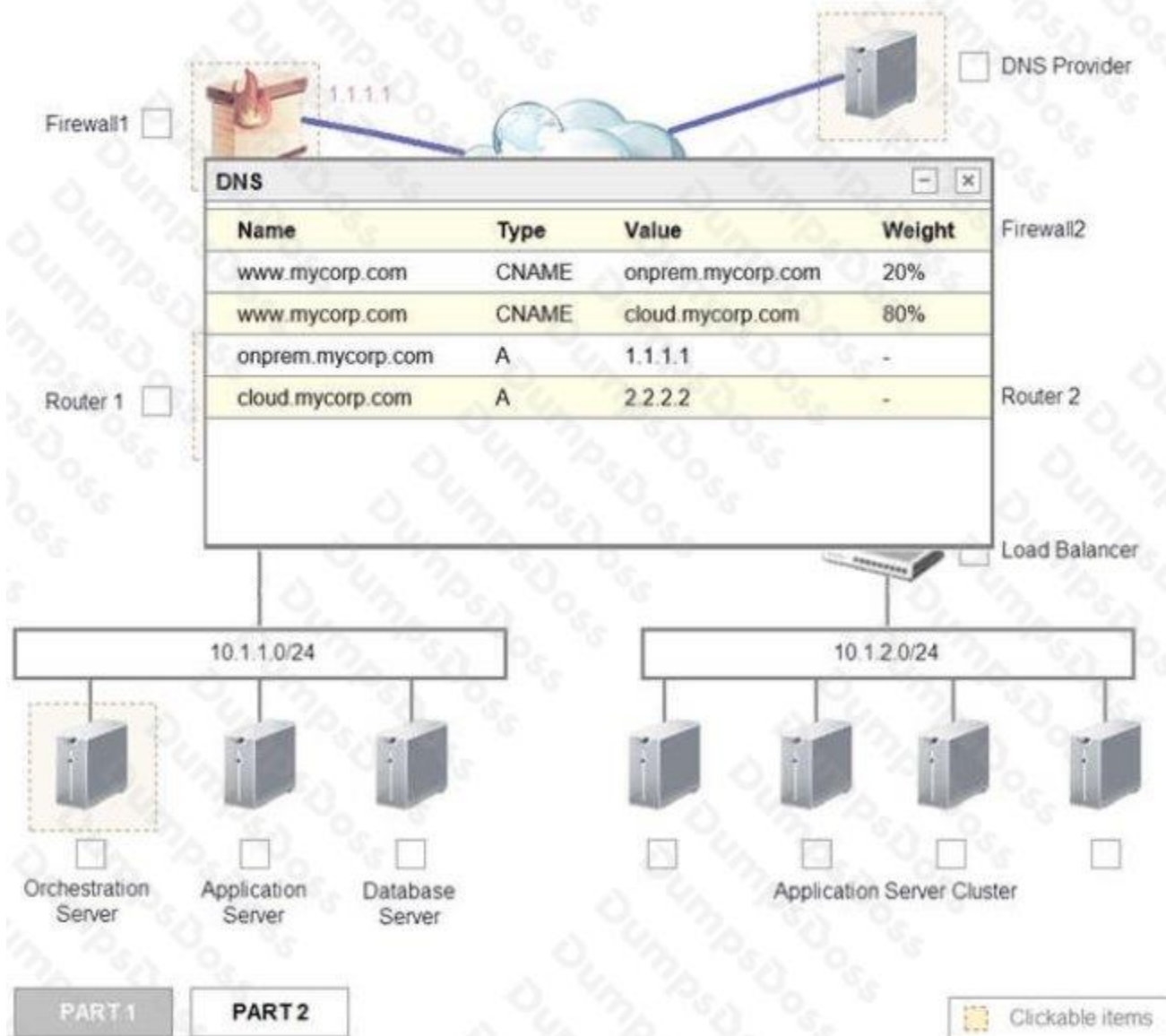
PART 1

Instruction: Click on each device to review more information of DNS, Firewall1, Firewall2, Router1, Router2, VPN and Orchestration Server.



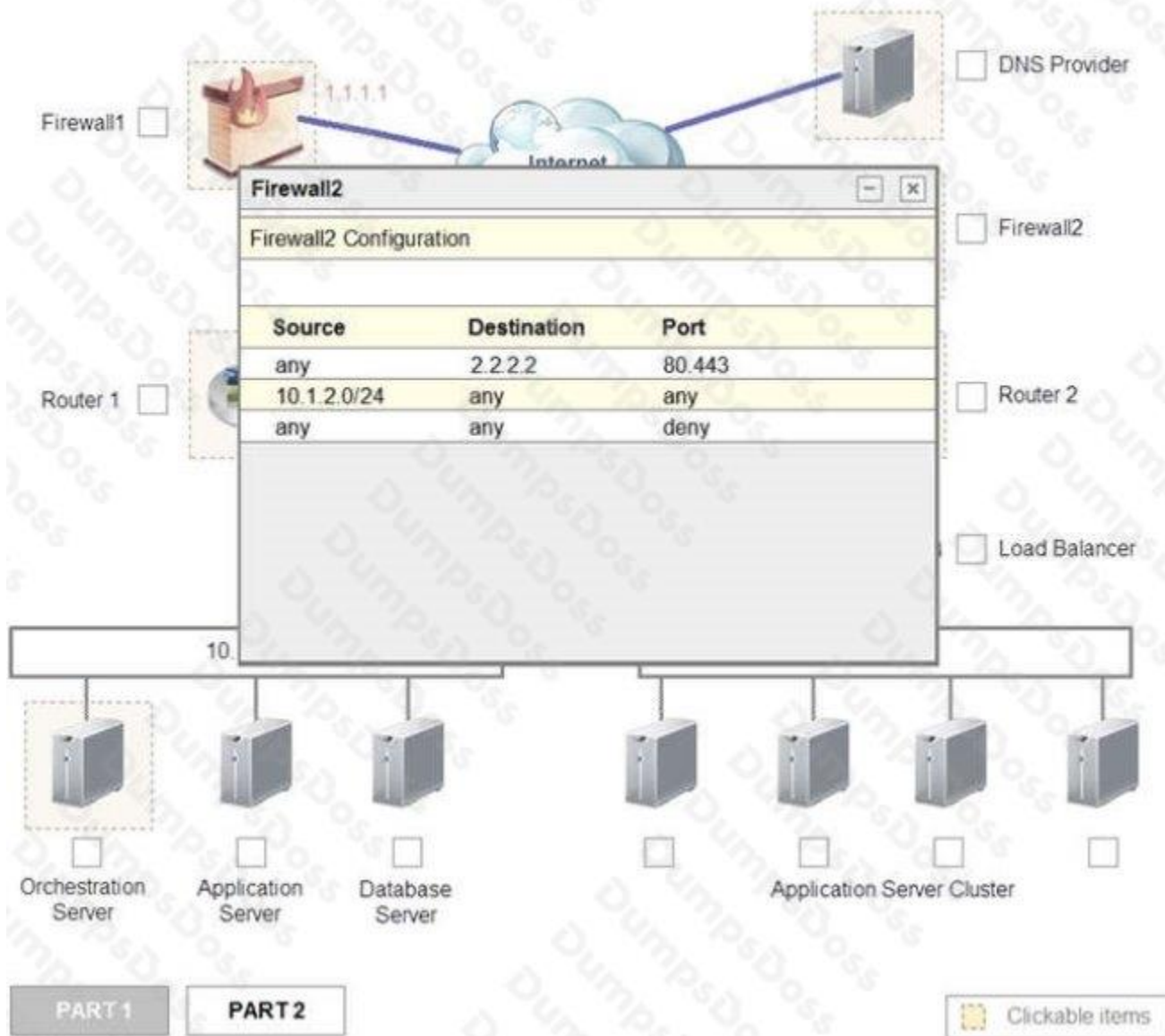
PART 1

Instruction: Click on each device to review more information of DNS, Firewall1, Firewall2, Router1, Router2, VPN and Orchestration Server.



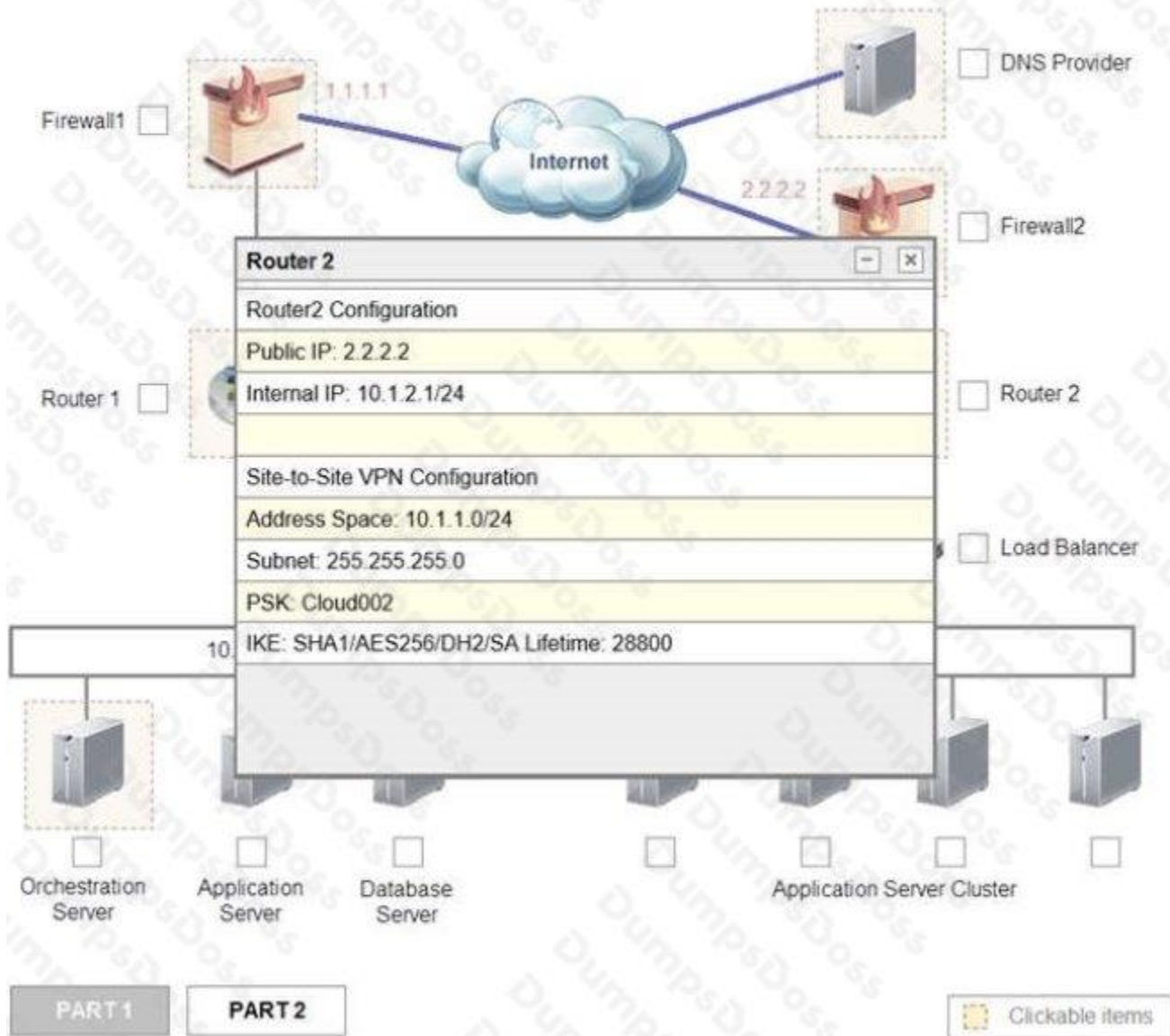
PART 1

Instruction: Click on each device to review more information of DNS, Firewall1, Firewall2, Router1, Router2, VPN and Orchestration Server.



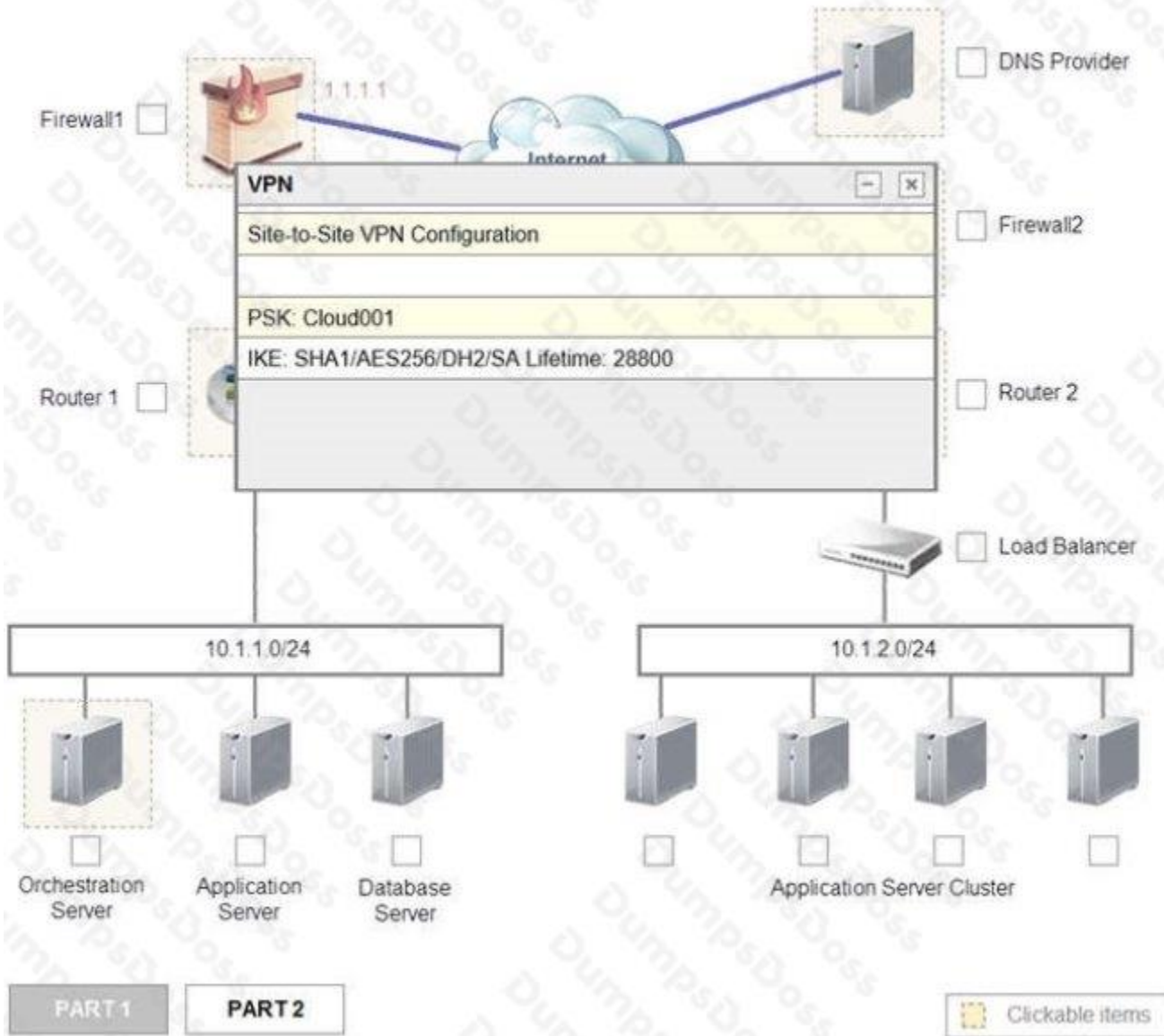
PART 1

Instruction: Click on each device to review more information of DNS, Firewall1, Firewall2, Router1, Router2, VPN and Orchestration Server.



PART 1

Instruction: Click on each device to review more information of DNS, Firewall1, Firewall2, Router1, Router2, VPN and Orchestration Server.



PART 1

Instruction: Click on each device to review more information of DNS, Firewall1, Firewall2, Router1, Router2, VPN and Orchestration Server.

The diagram shows a network topology with a central cloud icon. Connected devices include Firewall1 (firewall icon), Router 1 (router icon), Orchestration Server (server rack icon), Application Server (server rack icon), and a Cluster (two server rack icons). A central window titled 'Orchestration Server' displays the following details:

| Orchestration Server | |
|-------------------------------|--|
| Name: Basic_Server | <input type="checkbox"/> DNS Provider |
| Network: 10.1.1.0/24 | |
| Name: Cloud_Server | |
| Network: 10.1.2.0/24 | <input type="checkbox"/> Firewall2 |
| Name: Application_Server | |
| Baseline: Basic_Server | |
| Type: Webserver | |
| Version 1.0 | |
| Name: Database_Server | <input type="checkbox"/> Router 2 |
| Baseline: Basic_Server | |
| Type: Database Server | |
| Version 1.0 | |
| Name: Corporate_Datacenter | <input type="checkbox"/> Load Balancer |
| Baseline: Application_Server | |
| Count: 1 | |
| Name: Corporate_DataCenter | |
| Baseline: Database_Server | |
| Count: 1 | |
| Group: Cloud_Service_Provider | |
| Baseline: Cloud_Server | |
| Count: 4 | <input type="checkbox"/> Cluster |

At the bottom, there are two buttons: 'PART 1' and 'PART 2'. A legend indicates that dashed boxes around icons represent 'Clickable items'.

Cloud Hybrid Network Diagram

Part 1

Part 2

Only select a maximum of TWO options from the multiple choice question

- ☐ Deploy a Replica of the Database Server in the Cloud Provider.
- ☐ Update the PSK (Pre-shared key) in Router 2.
- ☐ Update the A record on the DNS from 2.2.2.2 to 1.1.1.1.
- ☐ Promote deny All to allow All in Firewall 1 and Firewall 2.
- ☐ Change the Address Space on Router 2.
- ☐ Change internal IP Address of Router 1.
- ☐ Reverse the Weight property in the two CNAME records on the DNS.
- ☐ Add the Application Server at on-premises to the Load Balancer.

ANSWER: See the solution below.

Explanation:

Part 1:

Router 2 is the problem and this should be selected. If you examine the preshared key used for the VPN you will see that it is not configured with the correct key. It is using Cloud002 while router1 is using Cloud001

Part 2:

Update the PSK (Pre-shared key in Router2)

Add the Application Server at on-premises to the Load Balancer

QUESTION NO: 13

A CSA needs to migrate 200TB of on-premises SAN data to a private cloud located in the same region. Which of the following should the CSA analyze? (Choose two.)

- A. VPN restrictions
- B. DNS settings
- C. Network bandwidth
- D. SSO settings
- E. Maintenance windows
- F. Legal restrictions

ANSWER: C E**QUESTION NO: 14**

A new startup company is growing and wants to deploy a human resources management system on a private cloud that is only accessible to the human resources department. Which of the following is the BEST method of access control?

- A. Discretionary access control
- B. Mandatory access control
- C. Non-discretionary access control
- D. Comprehensive access control

ANSWER: A**QUESTION NO: 15**

An engineer is responsible for managing a private cloud environment at a software company. Company developers perform all programming in the cloud environment. There are two departments working on a highly classified product that now requires dedicated resources, which cannot be viewed or accessed by other departments in the cloud environment. Which of the following should the engineer perform to ensure the requirements are met? (Choose three.)

- A. Create a baseline
- B. Assign an ACL
- C. Verify segmentation
- D. Use thin provisioned storage
- E. Automate patch deployments
- F. Create a tenant
- G. Deploy a PKI solution

ANSWER: B C G