

# DUMPSBOSS.COM

## Nokia Mobility Manager

Nokia 4A0-M03

Version Demo

Total Demo Questions: 5

Total Premium Questions: 42

Buy Premium PDF

<https://dumpsboss.com>

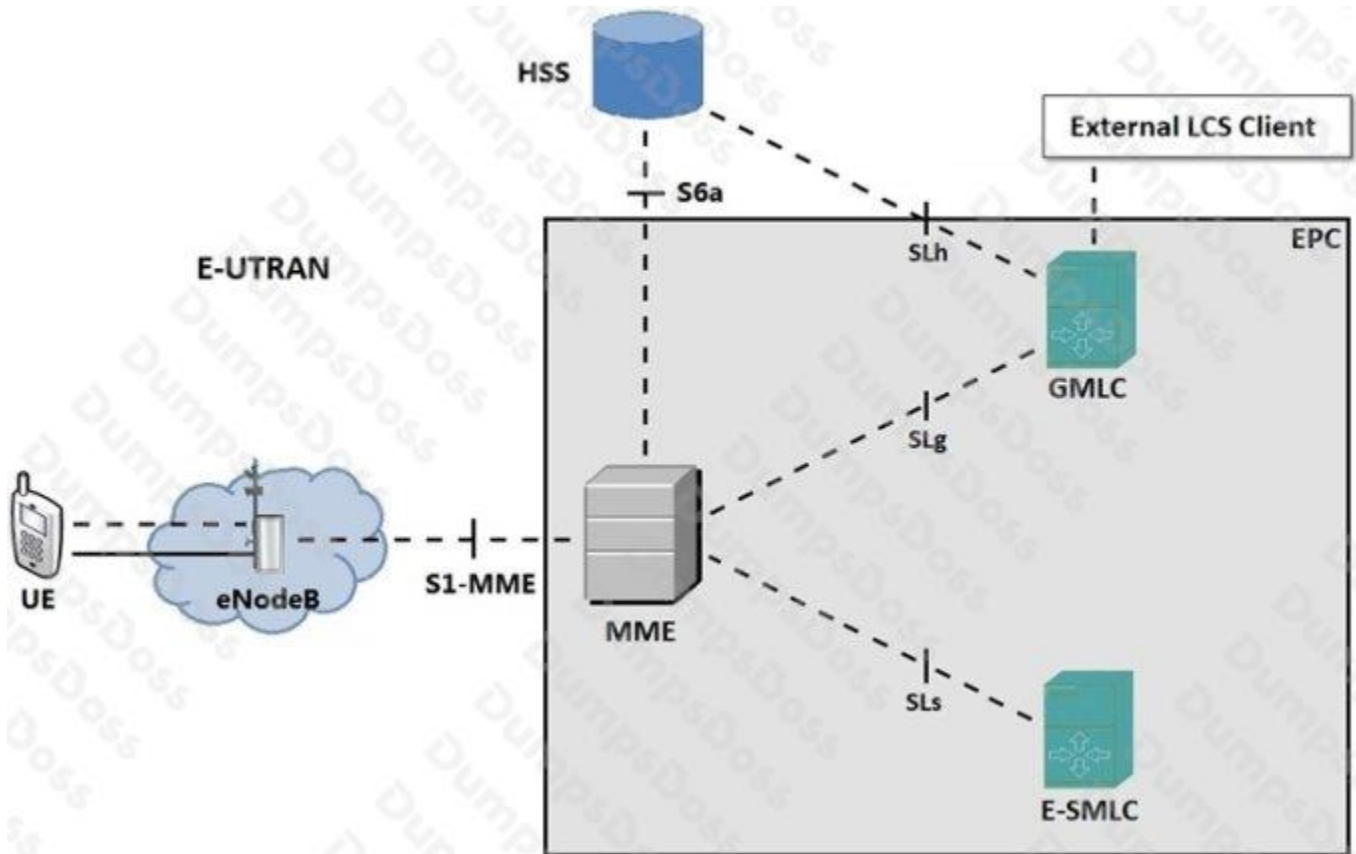
[support@dumpsboss.com](mailto:support@dumpsboss.com)

dumpsboss.com



**QUESTION NO: 1**

Given the exhibit, which component initiated a mobile-terminated location request (MT-LR) procedure for external LCS client?



- A. MME
- B. GMSC
- C. E-SMLC
- D. HSS

**ANSWER: D**

**Explanation:**

Reference:

[https://www.google.com/url?sa=t&rct=j&q=&esrc=s&source=web&cd=&ved=2ahUKEwiEuu\\_cmnrnsAhXiD2MBHQUND3AQFjAAegQIBhAC&url=ftp%3A%2F%2Fwww.3gpp.org%2Ftsg\\_sa%2FWG5\\_TM%2FTSGS5\\_68%2F\\_specs\\_for\\_checking%2Fupgrade%2F32271-900.doc&usg=AOvVaw1w-lpeUNE8VTNAgojrdFa4](https://www.google.com/url?sa=t&rct=j&q=&esrc=s&source=web&cd=&ved=2ahUKEwiEuu_cmnrnsAhXiD2MBHQUND3AQFjAAegQIBhAC&url=ftp%3A%2F%2Fwww.3gpp.org%2Ftsg_sa%2FWG5_TM%2FTSGS5_68%2F_specs_for_checking%2Fupgrade%2F32271-900.doc&usg=AOvVaw1w-lpeUNE8VTNAgojrdFa4)

**QUESTION NO: 2**

Which of the following statements regarding GTP-C is FALSE?

- A. GTP-C is a tunneling protocol.
- B. GTP-C runs over UDP/IP.
- C. GTP-C is the control plane part of GTP.
- D. GTP-C messages carry Attribute Value Pairs (AVPs).

**ANSWER: C**

**Explanation:**

Reference: [https://en.wikipedia.org/wiki/GPRS\\_Tunnelling\\_Protocol#GTP-C\\_-\\_GTP\\_control](https://en.wikipedia.org/wiki/GPRS_Tunnelling_Protocol#GTP-C_-_GTP_control)

**QUESTION NO: 3**

What information does eNodeB use to ensure MME load balancing during MME selection?

- A. MME relative capacity value received from each MME in the pool
- B. MME capacity value received from the UE attach request message
- C. MME capacity value from the UE's subscription data received from the HSS
- D. MME relative capacity value calculated by each MME based on the current network load

**ANSWER: A****QUESTION NO: 4**

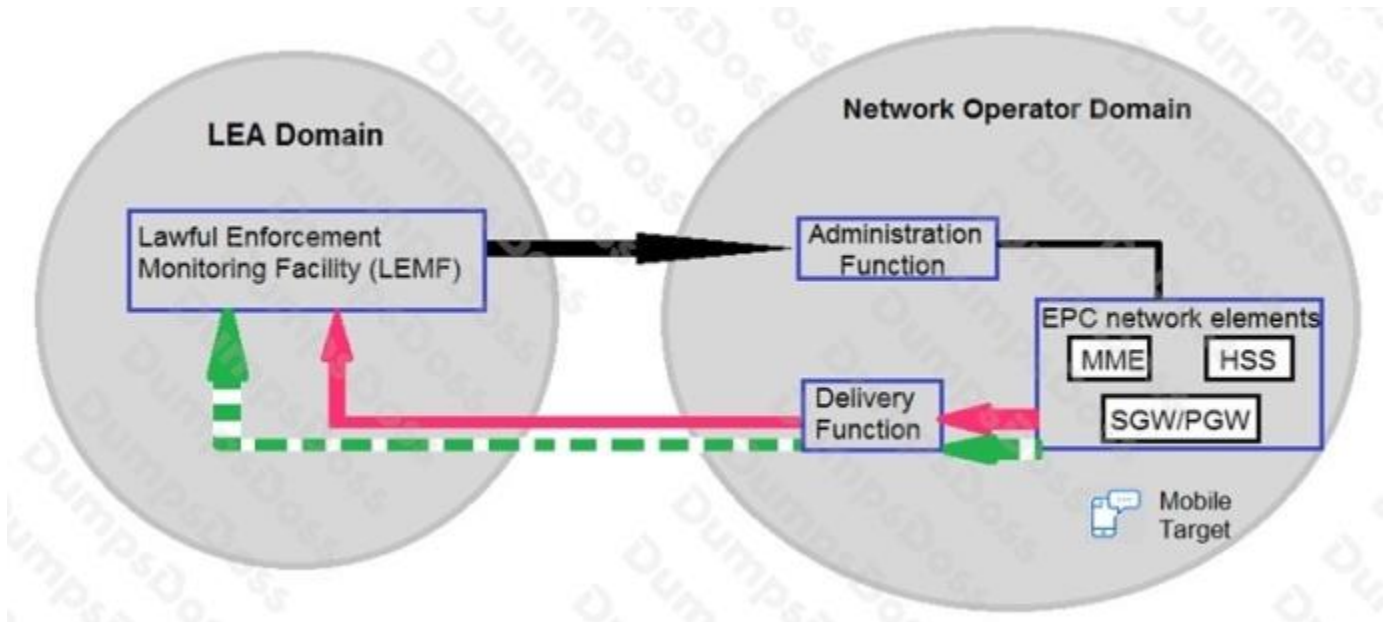
Which of the following is NOT performed by the MME during service request procedure?

- A. MME sends paging messages to a list of eNodeBs.
- B. MME updates the SGW with current eNodeB information.
- C. MME re-establishes S11 bearers for the UE.
- D. MME requests eNodeB to establish radio and S1 bearers for the UE.

**ANSWER: C**

**QUESTION NO: 5**

Given the exhibit, which type of message is sent from the MME to the lawful enforcement monitoring facility (LEMF) for lawful interception support?



- A. Intercept request message
- B. Location request message
- C. Content of communication (CC) message
- D. Intercept related information (IRI) message

**ANSWER: C**