

DUMPSBOSS.COM

CompTIA Cloud+ Certification Exam

CompTIA CV0-003

Version Demo

Total Demo Questions: 15

Total Premium Questions: 244

Buy Premium PDF

<https://dumpsboss.com>

support@dumpsboss.com

dumpsboss.com

QUESTION NO: 1

While investigating network traffic, a cloud administrator discovers the monthly billing has increased substantially. Upon further review, it appears the servers have been compromised, and sensitive files have been exfiltrated. Which of the following can be implemented to maintain data confidentiality?

- A. Hardening
- B. IAM
- C. Encryption
- D. IPSec

ANSWER: C**QUESTION NO: 2**

A systems administrator is building a new virtualization cluster. The cluster consists of five virtual hosts, which each have flash and spinning disks. This storage is shared among all the virtual hosts, where a virtual machine running on one host may store data on another host.

This is an example of:

- A. a storage area network
- B. a network file system
- C. hyperconverged storage
- D. thick-provisioned disks

ANSWER: A**QUESTION NO: 3**

A cloud administrator would like to deploy a cloud solution to its provider using automation techniques. Which of the following must be used? (Choose two.)

- A. Auto-scaling
- B. Tagging
- C. Playbook
- D. Templates

E. Containers

F. Serverless

ANSWER: B D

QUESTION NO: 4 - (SIMULATION)

CORRECT TEXT

A company has decided to scale its e-commerce application from its corporate datacenter to a commercial cloud provider to meet an anticipated increase in demand during an upcoming holiday.

The majority of the application load takes place on the application server under normal conditions. For this reason, the company decides to deploy additional application servers into a commercial cloud provider using the on-premises orchestration engine that installs and configures common software and network configurations.

The remote computing environment is connected to the on-premises datacenter via a site-to-site IPsec tunnel. The external DNS provider has been configured to use weighted round-robin routing to load balance connections from the Internet.

During testing, the company discovers that only 20% of connections completed successfully.

INSTRUCTIONS

Review the network architecture and supporting documents and fulfill these requirements:

Part 1:

Analyze the configuration of the following components: DNS, Firewall 1, Firewall 2, Router 1, Router 2, VPN and Orchestrator Server.

Identify the problematic device(s).

Part 2:

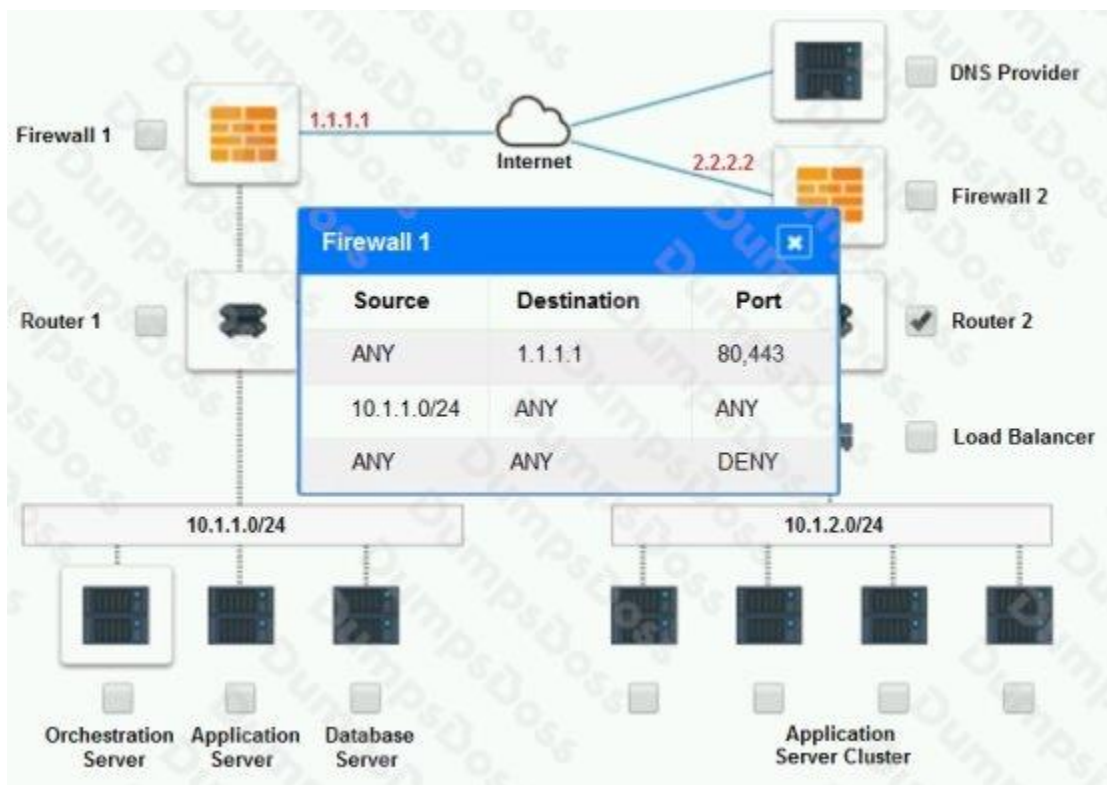
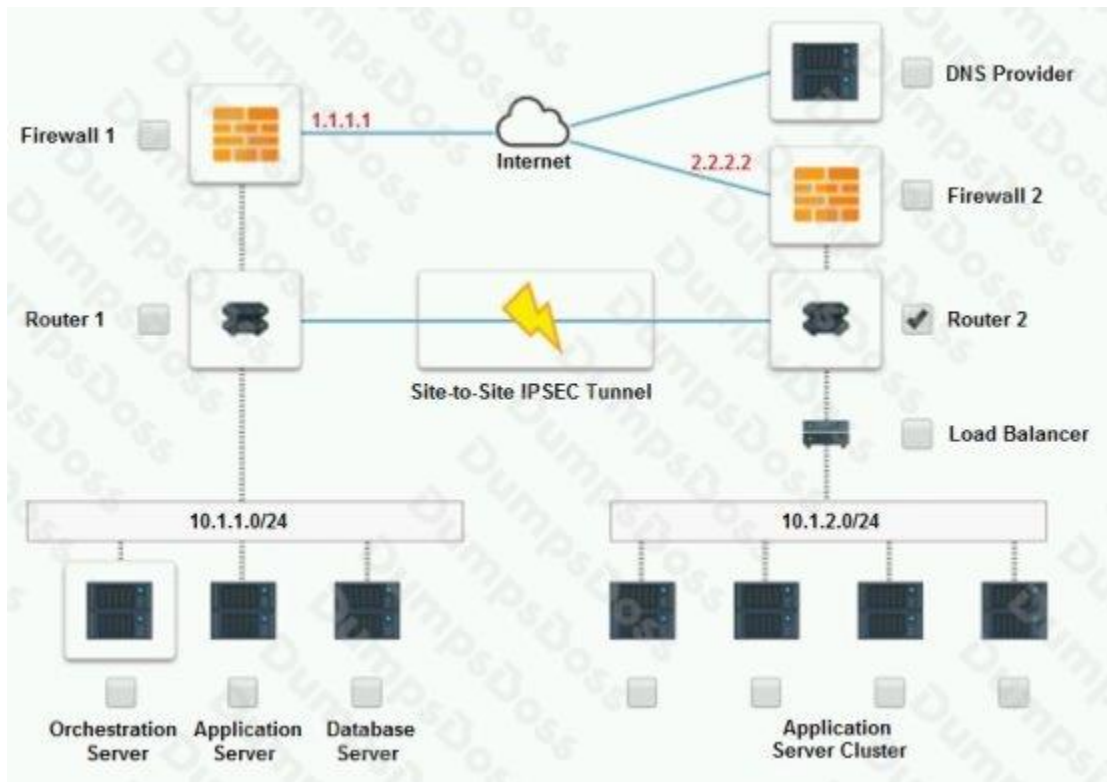
Identify the correct options to provide adequate configuration for hybrid cloud architecture.

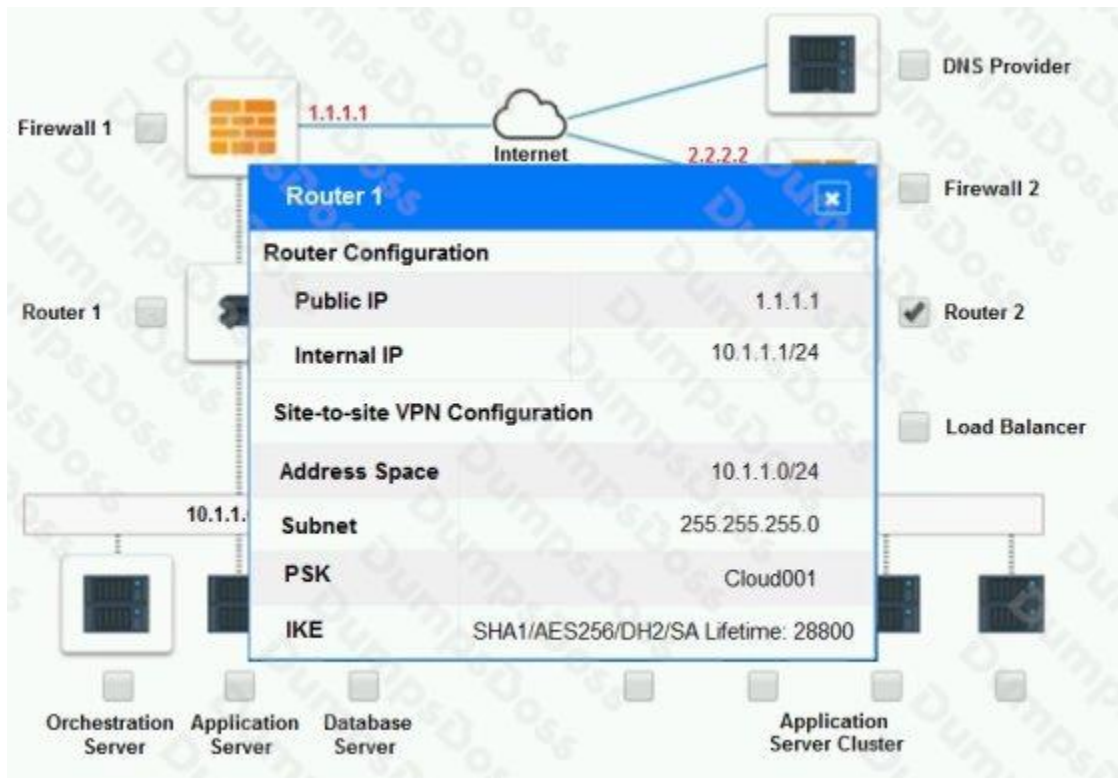
If at any time you would like to bring back the initial state of the simulation, please click the

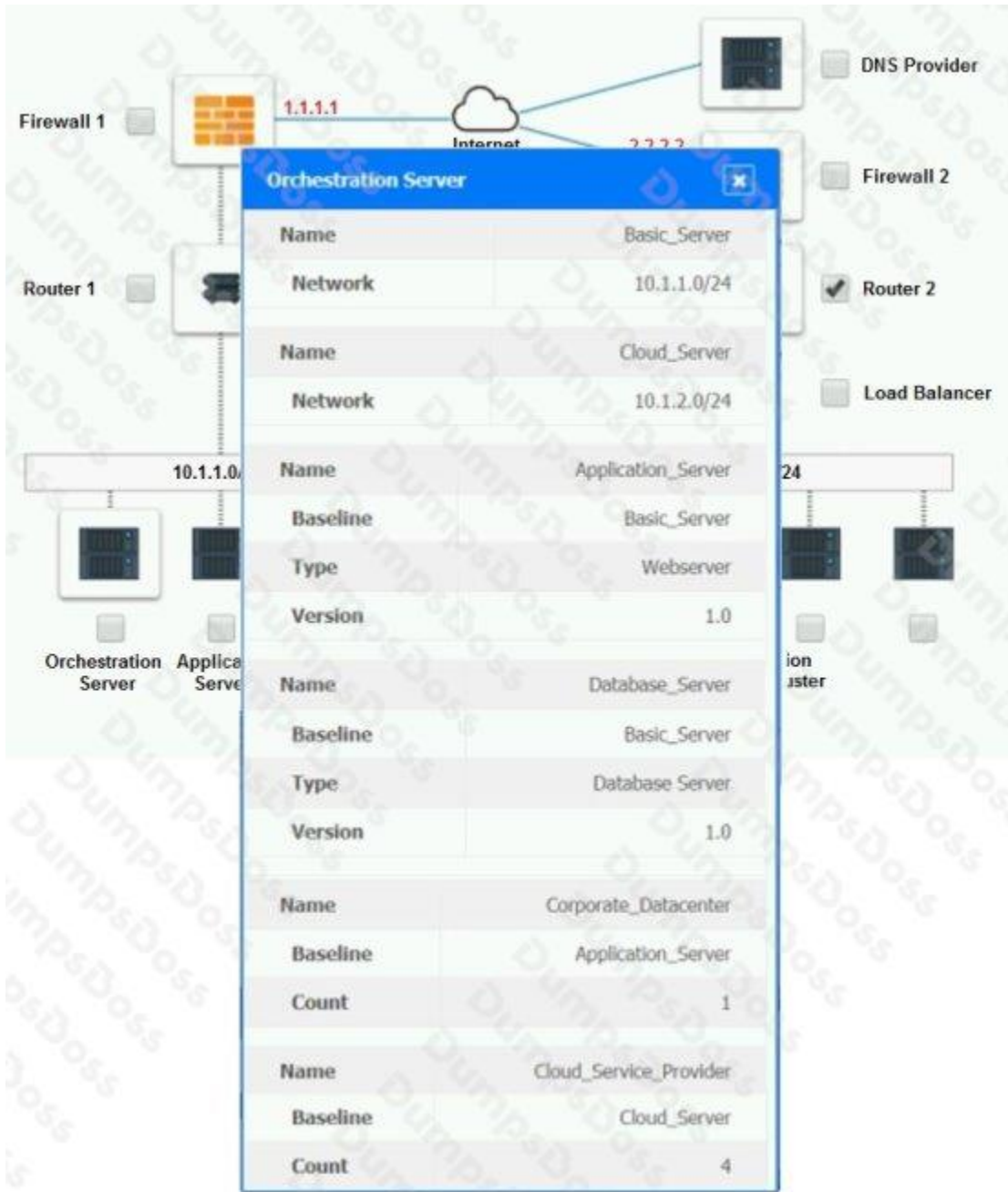
Reset All button.

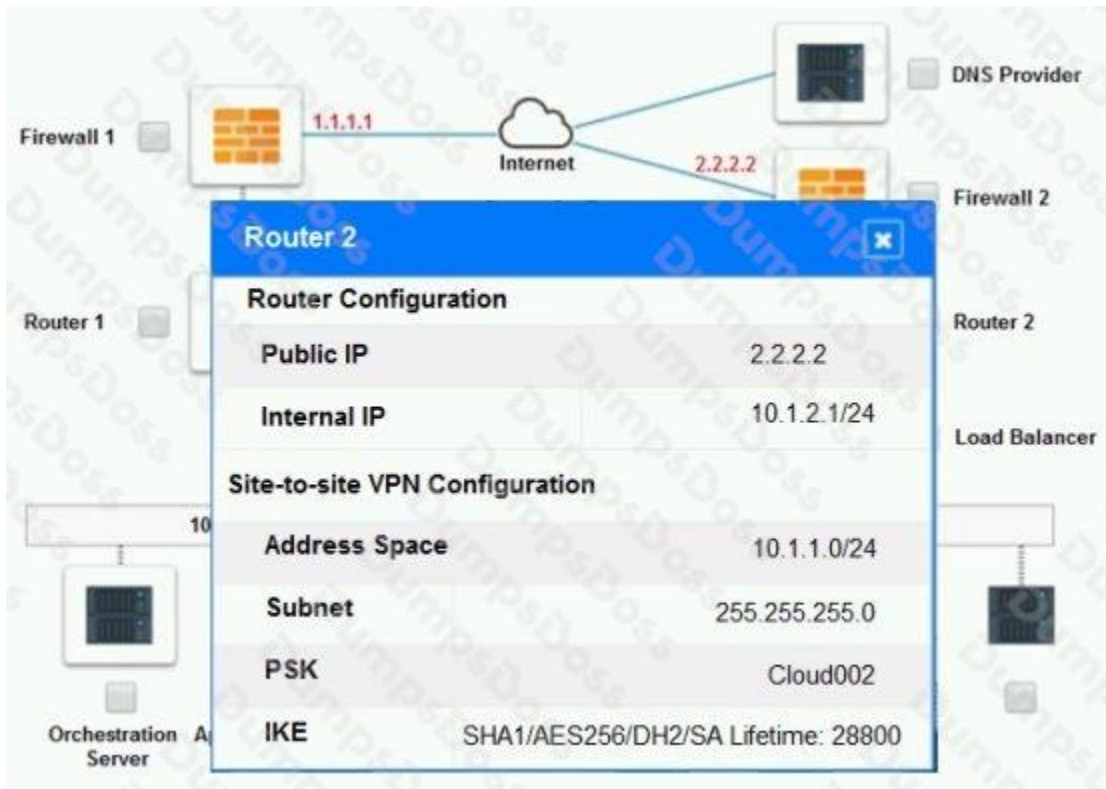
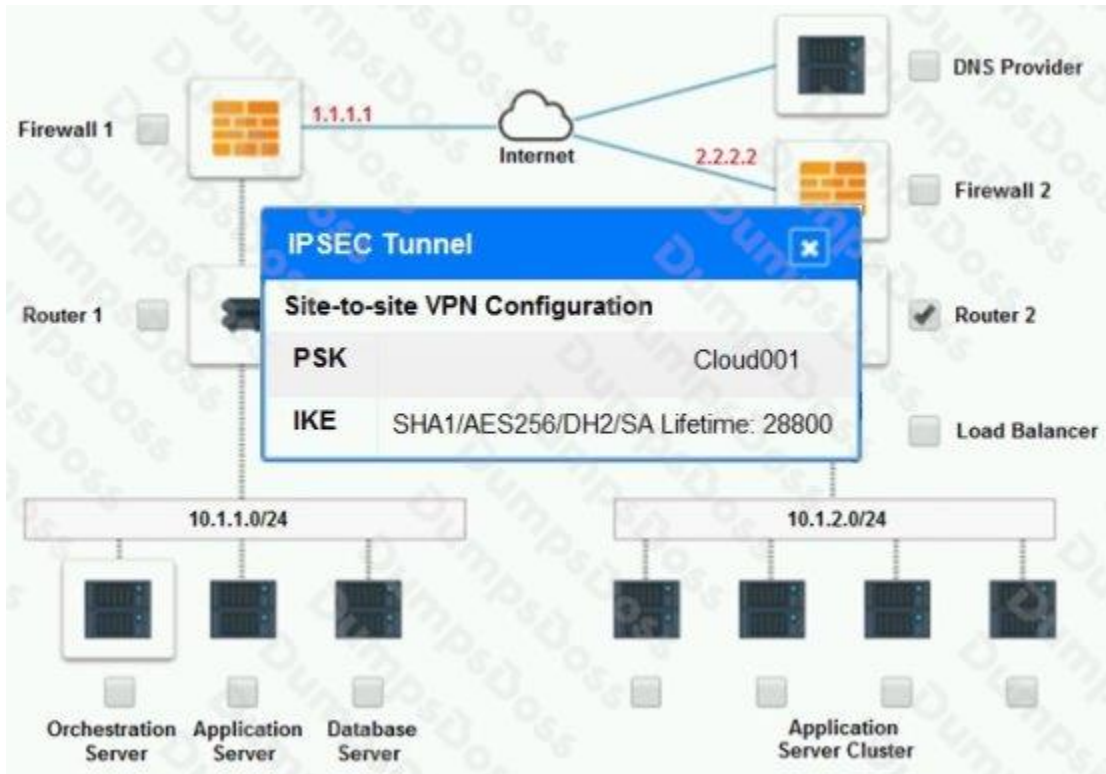
Part 1:

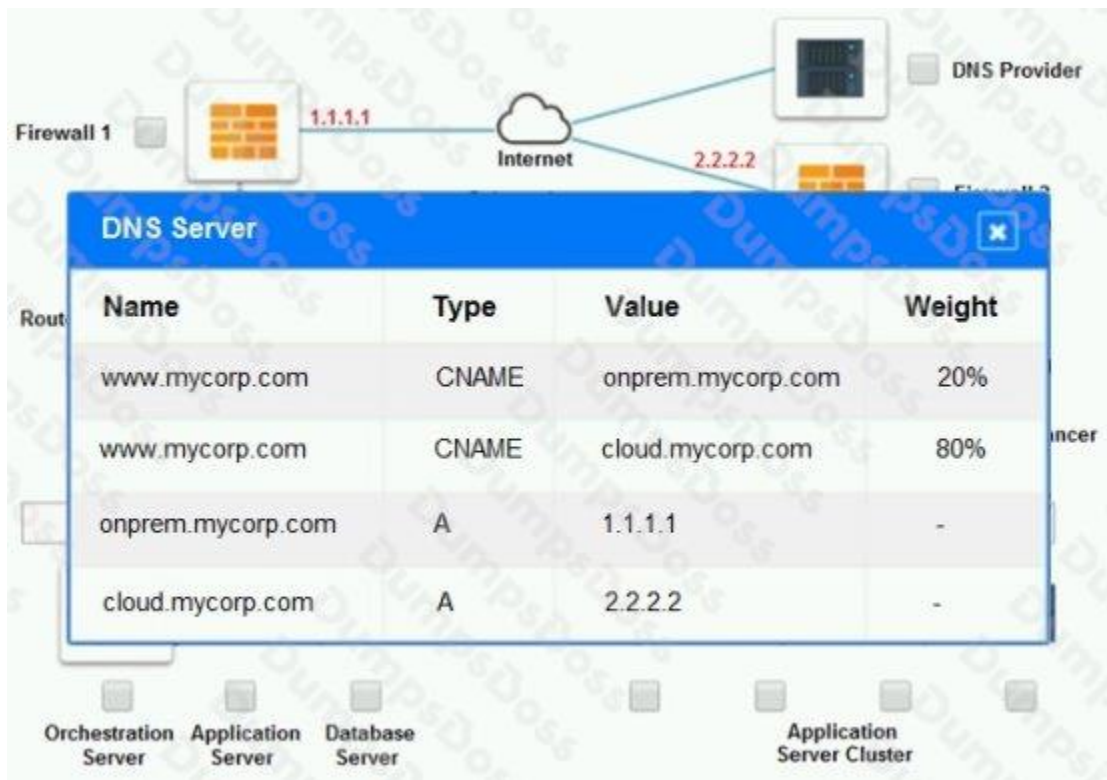
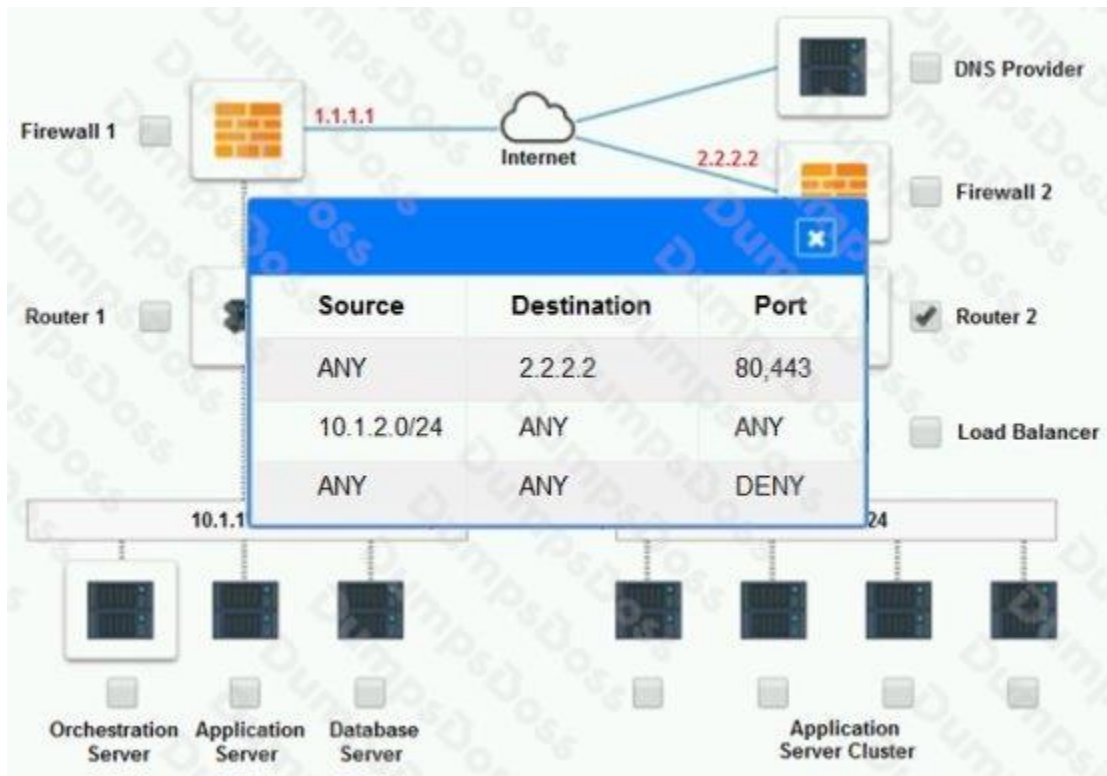
Cloud Hybrid Network Diagram











Part 2:

Only select a maximum of TWO options from the multiple choice question

- Deploy a Replica of the Database Server in the Cloud Provider.
- Update the PSK (Pre-shared key) in Router 2.
- Update the A record on the DNS from 2.2.2.2 to 1.1.1.1.
- Promote deny All to allow All in Firewall 1 and Firewall 2.
- Change the Address Space on Router 2.
- Change internal IP Address of Router 1.
- Reverse the Weight property in the two CNAME records on the DNS.
- Add the Application Server at on-premises to the Load Balancer.

ANSWER: See Explanation Below For Answer

Explanation:

:

- ⇒ Change the Address Space on Router2
- ⇒ Update the PSK (Pre-shared key in Router2)

QUESTION NO: 5

A cloud administrator has created a new asynchronous workflow to deploy VMs to the cloud in bulk. When the workflow is tested for a single VM, it completes successfully. However, if the workflow is used to create 50 VMs at once, the job fails. Which of the following is the MOST likely cause of the issue? (Choose two.)

- A. Incorrect permissions
- B. Insufficient storage
- C. Billing issues with the cloud provider
- D. No connectivity to the public cloud
- E. Expired API token
- F. Disabled autoscaling

ANSWER: A B

QUESTION NO: 6

A systems administrator is analyzing a report of slow performance in a cloud application. This application is working behind a network load balancer with two VMs, and each VM has its own digital certificate configured. Currently, each VM is consuming 85% CPU on average. Due to cost restrictions, the administrator cannot scale vertically or horizontally in the environment. Which of the following actions should the administrator take to decrease the CPU utilization? (Choose two.)

- A. Configure the communication between the load balancer and the VMs to use a VPN.
- B. Move the digital certificate to the load balancer.
- C. Configure the communication between the load balancer and the VMs to use HTTP.
- D. Reissue digital certificates on the VMs.
- E. Configure the communication between the load balancer and the VMs to use HTTPS.
- F. Keep the digital certificates on the VMs.

ANSWER: B E**QUESTION NO: 7**

A systems administrator for an e-commerce company will be migrating the company's main website to a cloud provider. The principal requirement is that the website must be highly available.

Which of the following will BEST address this requirement?

- A. Vertical scaling
- B. A server cluster
- C. Redundant switches
- D. A next-generation firewall

ANSWER: A**QUESTION NO: 8**

A company wants to implement business continuity, and the cloud solution architect needs to design the correct solution.

Which of the following will provide the data to measure business continuity? (Choose two.)

- A. A service-level agreement
- B. Automation scripts
- C. Playbooks

- D. A network diagram
- E. A backup and restore
- F. A recovery time objective

ANSWER: A F

QUESTION NO: 9

A cloud administrator is upgrading a cloud environment and needs to update the automation script to use a new feature from the cloud provider. After executing the script, the deployment fails. Which of the following is the MOST likely cause?

- A. API incompatibility
- B. Location changes
- C. Account permissions
- D. Network failure

ANSWER: C

QUESTION NO: 10

A cloud administrator has built a new private cloud environment and needs to monitor all computer, storage, and network components of the environment.

Which of the following protocols would be MOST useful for this task?

- A. SMTP
- B. SCP
- C. SNMP
- D. SFTP

ANSWER: C

QUESTION NO: 11

A company is preparing a hypervisor environment to implement a database cluster. One of the requirements is to share the disks between the nodes of the cluster to access the same LUN. Which of the following protocols should the company use? (Choose two.)

- A. CIFS
- B. FTP
- C. iSCSI
- D. RAID 10
- E. NFS
- F. FC

ANSWER: C D

Explanation:

Reference: <https://www.vembu.com/blog/shared-storage-cluster-shared-volumes-configuration/>

QUESTION NO: 12

After analyzing a web server's logs, a systems administrator sees that users are connecting to the company's application through HTTP instead of HTTPS. The administrator then configures a redirect from HTTP to HTTPS on the web server, and the application responds with a connection time-out message.

Which of the following should the administrator verify NEXT?

- A. The TLS certificate
- B. The firewall rules
- C. The concurrent connection limit
- D. The folder permissions

ANSWER: A

QUESTION NO: 13

A systems administrator is performing upgrades to all the hypervisors in the environment. Which of the following components of the hypervisors should be upgraded? (Choose two.)

- A. The fabric interconnects
- B. The virtual appliances
- C. The firmware
- D. The virtual machines
- E. The baselines

F. The operating system

ANSWER: C F

QUESTION NO: 14

A cloud administrator is building a new VM for machine-learning training. The developer requesting the VM has stated that the machine will need a full GPU dedicated to it.

Which of the following configuration options would BEST meet this requirement?

- A. Virtual GPU
- B. External GPU
- C. Passthrough GPU
- D. Shared GPU

ANSWER: C

Explanation:

Reference: <https://blogs.vmware.com/apps/2018/09/using-gpus-with-virtual-machines-on-vsphere-part-2-vmdirectpath-i-o.html>

QUESTION NO: 15

A system administrator has provisioned a new web server. Which of the following, in combination, form the best practice to secure the server's OS? (Choose three.)

- A. Install TLS certificates on the server.
- B. Forward port 80 traffic to port 443.
- C. Disable TLS 1.0/1.1 and SSL.
- D. Disable password authentication.
- E. Enable SSH key access only.
- F. Provision the server in a separate VPC.
- G. Disable the superuser/administrator account.
- H. Restrict access on port 22 to the IP address of the administrator's workstation.

ANSWER: A F G

Explanation:

Reference: <https://phoenixnap.com/kb/server-security-tips>