



## **Mist AI. Associate (JNCIA-MistAI)**

**Juniper JN0-250**

**Version Demo**

**Total Demo Questions: 10**

**Total Premium Questions: 65**

**Buy Premium PDF**

**<https://dumpsboss.com>**

**[support@dumpsboss.com](mailto:support@dumpsboss.com)**

**dumpsboss.com**



**QUESTION NO: 1**

The only protocol used by your network is TCP/IP, despite the fact that workstations in the organization do not have access to the Internet. A user has been accessing files on server on your network and now wants to connect to a Web server that is used as part of the company's intranet. The user enters the URL of the Web site into Internet Explorer.

Which of the following servers will be used to provide information needed to connect to the Web server?

- A. DHCP server
- B. DNS server
- C. WINS server
- D. File server

**ANSWER: B****QUESTION NO: 2**

You work as the network administrator at ABC.com. The ABC.com network has a domain named ABC.com. The servers at the ABC.com network run Windows Server and the workstations, Windows Professional.

During the course of the day you have received instructions from the CIO to implement Windows Server Update Services (WSUS) on a server named ABC-SR10. However, ABC0SR10 has limited disk space so you must conserve disk space usage. You must also ensure that all updates are approved before they are applied.

What steps must you take after clearing the Automatically Approve Updates for Installation checkbox and opening the WSUS console? (Choose all that apply.)

- A. You should modify the Revisions to Updates setting to deselect the automatically approve all updates.
- B. You should set the demand-dial connection to Persistent.
- C. You should execute the gpupdate command on all client computers.
- D. You should modify the Advanced Synchronization Options dialog box to stop the locally stored updates.
- E. You should apply the Setup security.inf security template.
- F. You should deselect the Automatically Approve Updates for Installation checkbox.

**ANSWER: A D F****QUESTION NO: 3**

You work as the network administrator at ABC.com. The ABC.com network has of a domain named ABC.com. The servers at the ABC.com network run Windows Server and the workstations, Windows Professional.

The ABC.com network contains a server named ABC-SR20. ABC-SR20 contains an in-house application that runs as a service named NetApp1, which fails from time to time. During the course of the day you have received instructions from the CIO to implement the following process for NetApp1:

- The NetApp1 service should be restarted if it fails after running for at least a day.
- ABC-SR20 should be restart if the NetApp1 service fails unsuccessful the entire workday, the server should be rebooted.

What actions must you take to implement this plan? (Choose all that apply.)

- A.** You need to enable the Master Key perfect forward secrecy (PFS).
- B.** You need to set up the response to the first and second failure to restart NetApp1.
- C.** You need to apply the Securews.inf security template.
- D.** You need to set up the Reset fail count after value for NetApp1 to 1 day.
- E.** You need to disable all services that are not required.

**ANSWER: B D**

#### QUESTION NO: 4

The ABC.com network consists of a single Active Directory domain named ABC.com. ABC.com has its headquarters in Chicago and several branch offices at various locations throughout the country. All servers on the ABC.com network run Windows Server.

You are in the process of configuring a VPN connection between the Chicago office and a branch office in Dallas using Windows Server computers running Routing and Remote Access (RRAS).

A ABC.com written security policy states that the requirements below must be met:

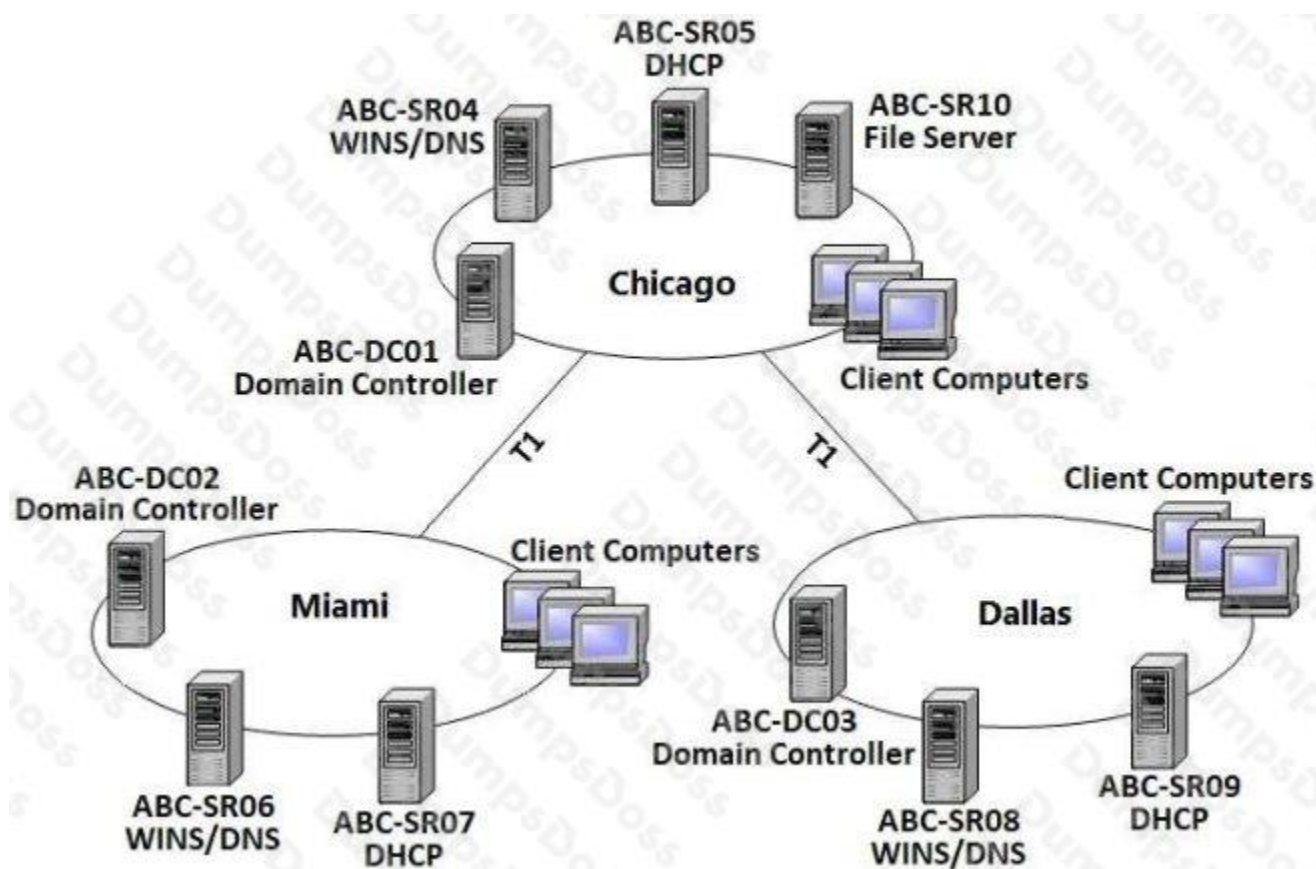
- Data transmitted over the VPN must be encrypted with end to end encryption.
- The VPN connection authentication should be at the computer level rather than at user level and with no credential information transmitted over the internet. How should you configure the VPN? (Choose two.)

- A.** Use a PPTP connection.
- B.** Use EAP-TLS authentication.
- C.** Use a PPP connection.
- D.** Use MS-CHAP v2 authentication.
- E.** Use MS-CHAP authentication.
- F.** Use PAP authentication.
- G.** Use an L2TP/IPSec connection.

**ANSWER: B G****QUESTION NO: 5**

The ABC.com network consists of a single Active Directory domain named ABC.com. All servers on the ABC.com network run Windows Server.

ABC.com has its headquarters in Chicago and two branch offices in Dallas and Miami. The branch offices are connected to the headquarters by means of T1 WAN links. The network at each office is configured as a separate Active Directory site as shown below.



ABC.com users in all three sites require access to a file server named ABC-SR10 that is located in the Chicago site.

Users in the Miami and Dallas offices are complaining about the unacceptable file server performance during peak working hours. You want to design a solution that provides fault tolerance for the file server and minimizes traffic over the WAN links during office hours.

Which solution would you recommend?

- A.** Implement a Distributed File System (DFS) with the DFS root in the Chicago office and DFS replicas in the Dallas and Miami offices. Configure replication to occur during off-peak hours.
- B.** Install Windows Server file servers in the Dallas and Miami offices. Use the File Replication Service to replicate the folders during off-peak hours.
- C.** Implement a two-node file server cluster in the Chicago office using Microsoft Cluster Services.

D. Implement a two-node file server cluster in each office using Microsoft Cluster Services.

**ANSWER: A**

#### QUESTION NO: 6

You work as the network administrator at ABC.com. The ABC.com network consists of a domain named ABC.com. The servers at the ABC.com network run Windows Server and the workstations, Windows Professional.

The ABC.com network has a server named ABC-SR11 that runs Windows Server Update Services (WSUS). ABC-SR11 has very little hard drive space. Therefore workstations must download critical updates from the Microsoft Web site.

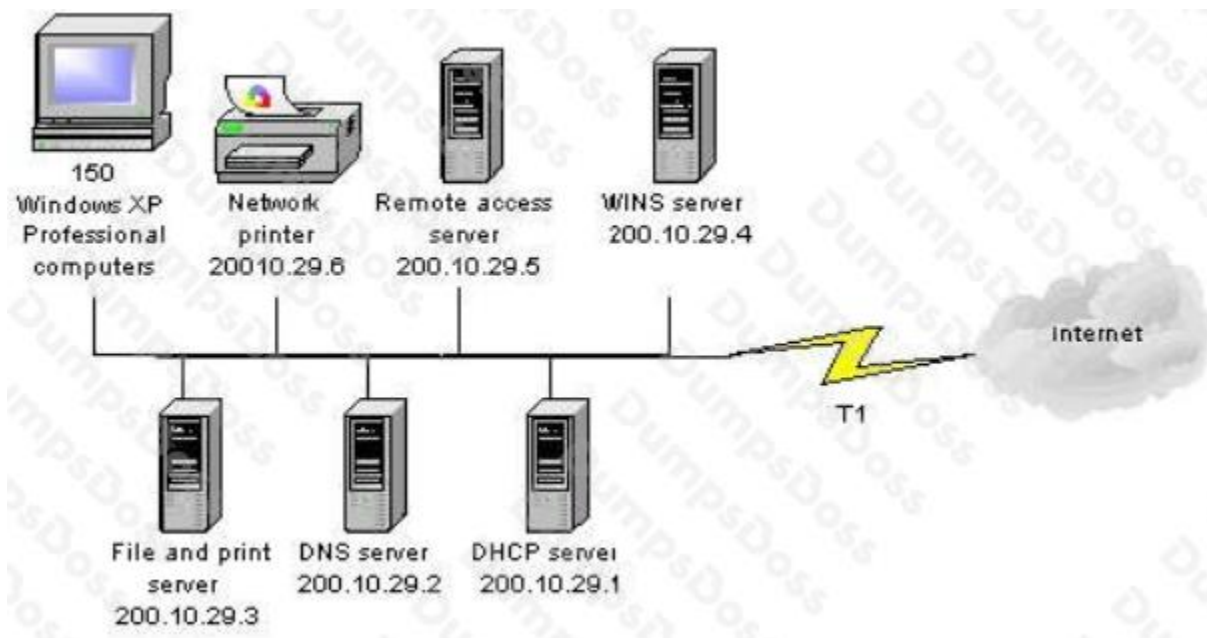
What actions must you take to make sure that the workstations download only approved updates from the Web site?

- A. You should disable the Network Monitor capture filter.
- B. You should set the synchronization option to not store updates locally.
- C. You should enable the Disable recursion option.
- D. You should apply the Setup security.inf security template.

**ANSWER: B**

#### QUESTION NO: 7

You are one of the administrators for your company's Windows Server network. The relevant portion of the network is presented in the following exhibit.



All servers, client computers and one network print device are currently configured with static IP addresses. The network IP address is 200.10.29.0. A DHCP server has been deployed but has not yet been configured. You must configure a new scope that will provide the existing client computers with IP configurations. The new scope should support an additional 25 new client computers that will be deployed within the next two months.

Which settings should be included in the new DHCP scope? Each correct answer presents part of the solution. (Choose three.)

- A. subnet mask: 255.255.255.0
- B. subnet mask: 255.255.255.128
- C. DHCP scope starting IP address: 200.10.29.7 DHCP scope ending IP address: 200.10.29.254
- D. DHCP scope starting IP address: 200.10.29.1 DHCP scope ending IP address: 200.10.29.254
- E. DHCP scope exclusion range starting IP address: 200.10.29.1  
DHCP scope exclusion range ending IP address: 200.10.29.6
- F. DHCP scope exclusion range starting IP address: 200.10.29.1 DHCP scope exclusion range ending IP address: 200.10.29.254

**ANSWER: A D E**

#### QUESTION NO: 8

You work as the network administrator at ABC.com. The ABC.com network has a domain named ABC.com. The servers at the ABC.com network run Windows Server and the workstations, Windows Professional.

The ABC.com network has a server named ABC-SR10 that runs Windows Server Update Services (WSUS). During synchronization you notice that you cannot connect to the Windows Update servers, however, you can access to other Web site not residing in the intranet.

What actions must you take to connect to the Windows Update servers?

- A. You must run the ipconfig/registerdns.
- B. You must configure the forwarders on ABC-SR10.
- C. You must set the authentication to the proxy server in the WSUS settings.
- D. You must run the gpupdate /force command on ABC-SR10.

**ANSWER: C**

#### QUESTION NO: 9

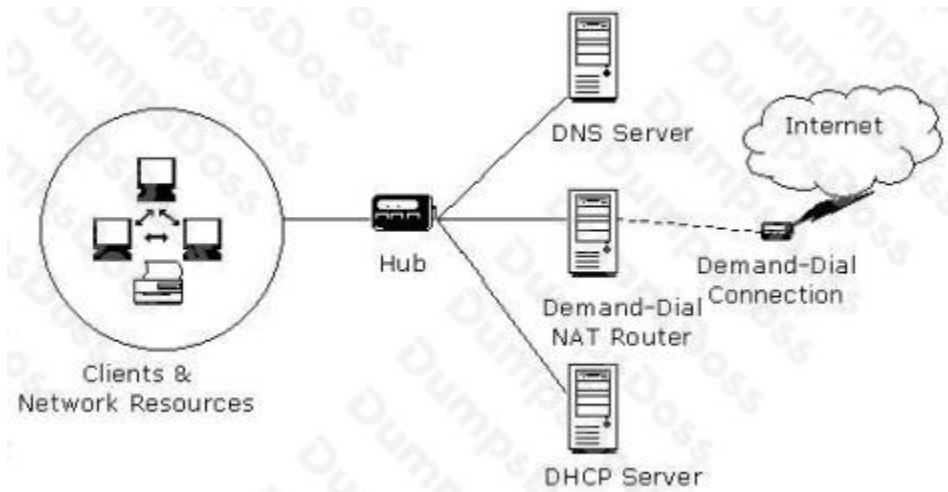
Which of the following addresses is suitable for dividing into at least nine subnets, each with the ability to support 200 hosts per network?

- A. 10.1.1.0/24
- B. 10.1.1.0/20
- C. 10.1.1.0/19
- D. 10.1.1.0/22

**ANSWER: B C**

#### QUESTION NO: 10

You work as a Network Administrator for Venus ABC.com. The company has a Windows Active Directory-based single domain single forest network. The functional level of the forest is Windows Server. The company wants to expand its network. The clients on the network require Internet connectivity through the router. You plan to install NAT for this purpose. The network plan of the company is shown in the image below:



As the number of clients is quite high, a Class A private network range is required. Which of the following is the correct Class A network address range that is set aside for private use and barred from routing over the network?

- A. 10.0.0.0 to 10.255.255.255
- B. 172.16.0.0 to 172.31.255.255
- C. 192.168.0.0 to 192.168.255.255
- D. 111.0.0.0 to 111.255.255.255

**ANSWER: A**