

DUMPSBOSS.COM

Check Point Certified Security Administrator

Checkpoint 156-215.77

Version Demo

Total Demo Questions: 15

Total Premium Questions: 388

Buy Premium PDF

<https://dumpsboss.com>

support@dumpsboss.com

dumpsboss.com

Topic Break Down

Topic	No. of Questions
Topic 1, Volume A	98
Topic 2, Volume B	100
Topic 3, Volume C	99
Topic 4, Volume D	91
Total	388

QUESTION NO: 1

Which of the following authentication methods can be configured in the Identity Awareness setup wizard?

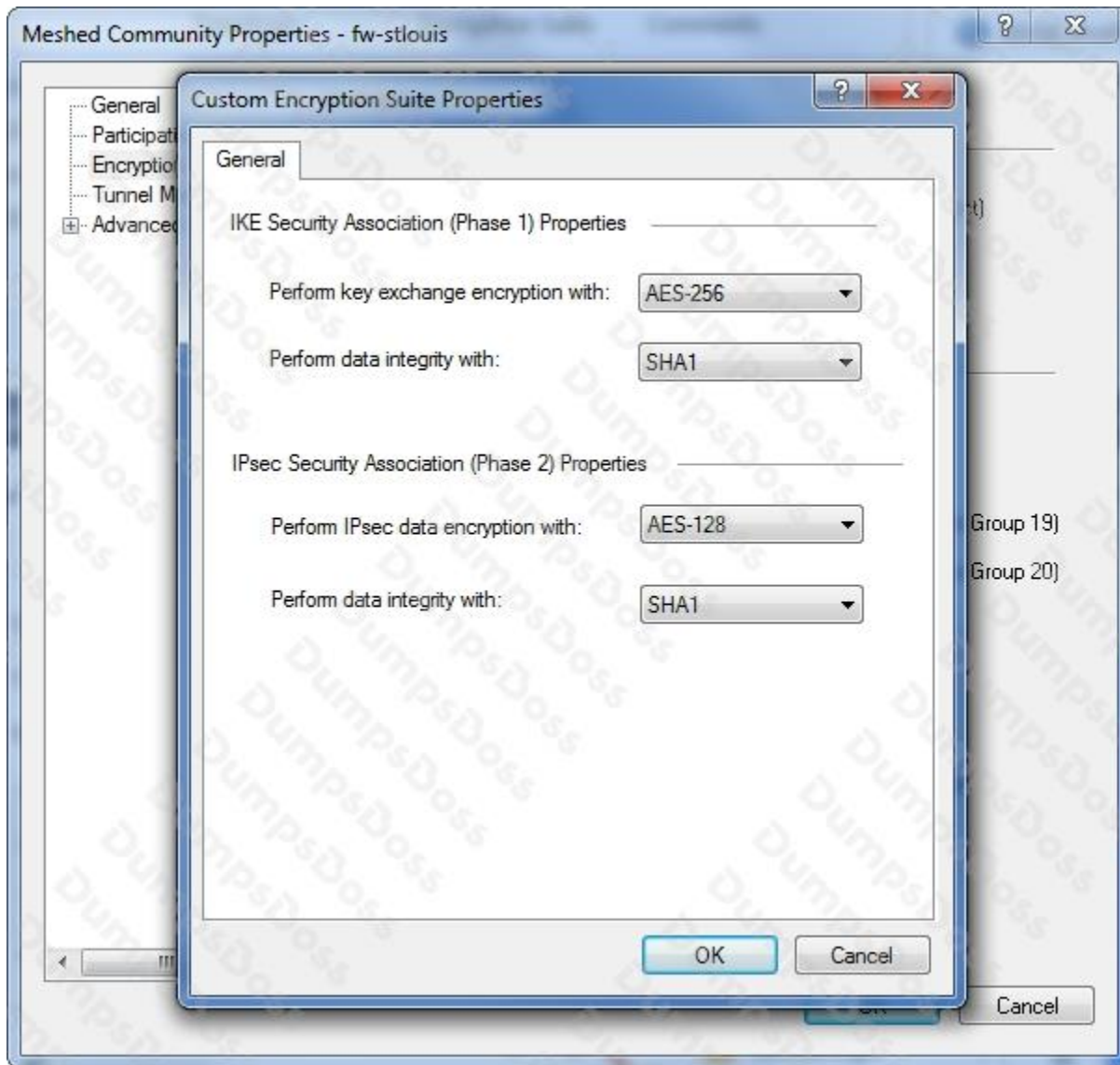
- A.** Check Point Password
- B.** TACACS
- C.** LDAP
- D.** Windows password

ANSWER: C

QUESTION NO: 2

You have a mesh VPN Community configured to create a site-to-site VPN. Given the displayed VPN properties, what can you conclude about this community?

Exhibit:



- A. The VPN Community will perform IKE Phase 1 key-exchange encryption using the longest key Security Gateway R77 supports.
- B. Changing the setting Perform key exchange encryption with from AES-256 to 3DES will enhance the VPN Community's security , and reduce encryption overhead.
- C. Change the data-integrity setting for this VPN Community because MD5 is incompatible with AES.
- D. Changing the setting Perform IPsec data encryption with from AES-128 to 3Des will increase the encryption overhead.

ANSWER: D

QUESTION NO: 3

Which command enables IP forwarding on IPSO?

- A. ipsofwd on admin
- B. echo 0 > /proc/sys/net/ipv4/ip_forward
- C. clish -c set routing active enable
- D. echo 1 > /proc/sys/net/ipv4/ip_forward

ANSWER: A

QUESTION NO: 4

Which of the following statements BEST describes Check Point's Hide Network Address Translation method?

- A. Translates many destination IP addresses into one destination IP address
- B. One-to-one NAT which implements PAT (Port Address Translation) for accomplishing both Source and Destination IP address translation
- C. Translates many source IP addresses into one source IP address
- D. Many-to-one NAT which implements PAT (Port Address Translation) for accomplishing both Source and Destination IP address translation

ANSWER: C

QUESTION NO: 5

Which of the following is a viable consideration when determining Rule Base order?

- A. Placing frequently accessed rules before less frequently accessed rules
- B. Grouping IPS rules with dynamic drop rules
- C. Adding SAM rules at the top of the Rule Base
- D. Grouping rules by date of creation

ANSWER: A

QUESTION NO: 6

The INSPECT engine inserts itself into the kernel between which two OSI model layers?

- A. Session and Transport
- B. Physical and Data
- C. Presentation and Application
- D. Datalink and Network

ANSWER: D

QUESTION NO: 7

For remote user authentication, which authentication scheme is NOT supported?

- A. Check Point Password
- B. RADIUS
- C. TACACS
- D. SecurID

ANSWER: C

QUESTION NO: 8

An Administrator without access to SmartDashboard installed a new IPSO-based R77 Security Gateway over the weekend. He e-mailed you the SIC activation key. You want to confirm communication between the Security Gateway and the Management Server by installing the Policy. What might prevent you from installing the Policy?

- A. An intermediate local Security Gateway does not allow a policy install through it to the remote new Security Gateway appliance. Resolve by running the command fw unloadlocal on the local Security Gateway.
- B. You first need to run the command fw unloadlocal on the R77 Security Gateway appliance in order to remove the restrictive default policy.
- C. You first need to create a new Gateway object in SmartDashboard, establish SIC via the Communication button, and define the Gateway's topology.
- D. You have not established Secure Internal Communications (SIC) between the Security Gateway and Management Server. You must initialize SIC on the Security Management Server.

ANSWER: C

QUESTION NO: 9

Your company has two headquarters, one in London, and one in New York. Each office includes several branch offices. The branch offices need to communicate with the headquarters in their country, not with each other, and only the headquarters need to communicate directly.

What is the BEST configuration for establishing VPN Communities for this company? VPN Communities comprised of:

- A.** One star Community with the option to mesh the center of the star: New York and London Gateways added to the center of the star with the mesh center Gateways option checked; all London branch offices defined in one satellite window, but, all New York branch offices defined in another satellite window.
- B.** Two mesh and one star Community: One mesh Community is set up for each of the headquarters and its branch offices. The star Community is configured with London as the center of the Community and New York is the satellite.
- C.** Two star and one mesh Community: One star Community is set up for each site, with headquarters as the Community center, and its branches as satellites. The mesh Community includes only New York and London Gateways.
- D.** Three mesh Communities: One for London headquarters and its branches, one for New York headquarters and its branches, and one for London and New York headquarters.

ANSWER: C**QUESTION NO: 10**

You are installing a Security Management Server. Your security plan calls for three administrators for this particular server. How many can you create during installation?

- A.** One
- B.** Only one with full access and one with read-only access
- C.** As many as you want
- D.** Depends on the license installed on the Security Management Server

ANSWER: A**QUESTION NO: 11**

Which statement below describes the most correct strategy for implementing a Rule Base?

- A.** Limit grouping to rules regarding specific access.
- B.** Place the most frequently used rules at the top of the Policy and the ones that are not frequently used further down.
- C.** Place a network-traffic rule above the administrator access rule.

D. Add the Stealth Rule before the last rule.

ANSWER: B

QUESTION NO: 12

Your Security Gateways are running near performance capacity and will get upgraded hardware next week.

Which of the following would be MOST effective for quickly dropping all connections from a specific attacker's IP at a peak time of day?

- A. Intrusion Detection System (IDS) Policy install
- B. Change the Rule Base and install the Policy to all Security Gateways
- C. SAM - Block Intruder feature of SmartView Tracker
- D. SAM - Suspicious Activity Rules feature of SmartView Monitor

ANSWER: D

QUESTION NO: 13

How can you most quickly reset Secure Internal Communications (SIC) between a Security Management Server and Security Gateway?

- A. From cpconfig on the Gateway, choose the Secure Internal Communication option and retype the activation key. Next, retype the same key in the Gateway object in SmartDashboard and reinitialize Secure Internal Communications (SIC).
- B. Use SmartUpdate to retype the Security Gateway activation key. This will automatically sync SIC to both the Security Management Server and Gateway.
- C. From the Security Management Server's command line, type fw putkey -p .
- D. Run the command fwm sic_reset to reinitialize the Security Management Server Internal Certificate Authority (ICA). Then retype the activation key on the Security Gateway from SmartDashboard.

ANSWER: A

QUESTION NO: 14

Which of the following are authentication methods that Security Gateway R77 uses to validate connection attempts? Select the response below that includes the MOST complete list of valid authentication methods.

- A. Proxied, User, Dynamic, Session
- B. Connection, User, Client
- C. User, Client, Session
- D. User, Proxied, Session

ANSWER: C

QUESTION NO: 15

Exhibit:

1. Run `cpconfig` on the Gateway, select **Secure Internal Communication**, enter the activation key, and reconfirm.
2. Initialize Internal Certificate Authority (ICA) on the Security Management Server.
3. Configure the Gateway object with the host name and IP addresses for the remote site.
4. Click the **Communication** button in the Gateway object's **General** screen, enter the activation key, and click **Initialize** and **OK**.
5. Install the Security Policy.

You installed Security Management Server on a computer using GAIa in the MegaCorp home office. You use IP address 10.1.1.1. You also installed the Security Gateway on a second GAIa computer, which you plan to ship to another Administrator at a MegaCorp hub office.

What is the correct order for pushing SIC certificates to the Gateway before shipping it?

- A. 2, 3, 4, 1, 5
- B. 2, 1, 3, 4, 5
- C. 1, 3, 2, 4, 5
- D. 2, 3, 4, 5, 1

ANSWER: B